



VIVANTI
RESIDENCES BY METEORA

A PROJECT BY

METEORA
DEVELOPERS



STEP INTO THE WORLD OF

Elevated Privileges

A residence is not just where you live, but where you truly unwind, recharge, and find balance. In the ever-evolving landscape of urban living, serene aquatic retreats serve as sanctuaries of relaxation, wellness, and social connection - offering a seamless escape from the relentless pace of city life.

From the refreshing vitality of a morning dip to the gentle caress of bubbling waters after a demanding day, and the quiet contemplation offered by the poolside, these spaces transform the concept of home into a haven of serenity.

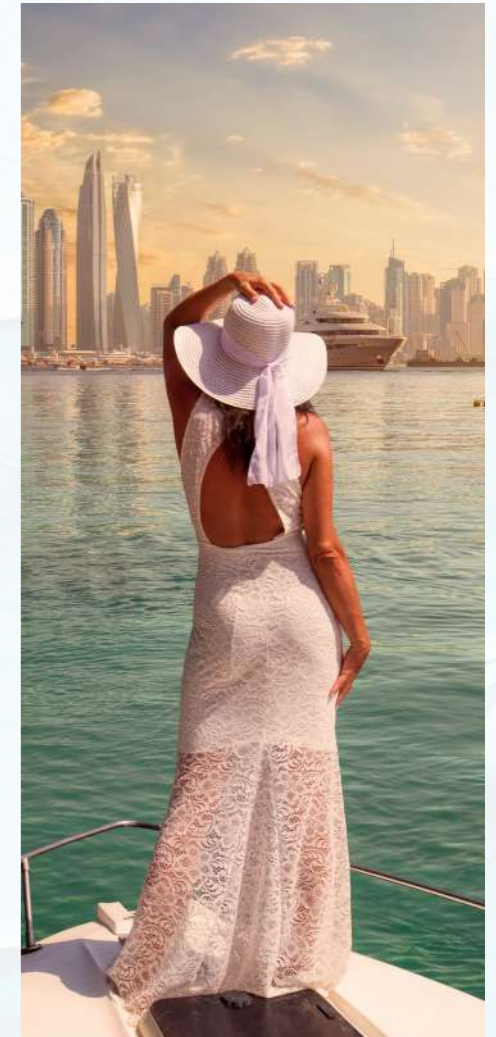
With this philosophy, we have integrated thoughtfully designed pools and jacuzzis into our intimate residences - creating an elevated lifestyle where indulgence and well-being coexist in perfect harmony.



Welcome to the Urban Utopia

Covered by acres of tranquil park spaces and golf courses, a dynamic blend of historic landmarks and modern skyscrapers, premium shopping & entertainment - here is a city that offers the best the world has to offer.

From the most visited shopping mall in the world to the longest driverless metro network to the fastest police car in service to the world's tallest architectural wonder, along with the tallest residential building, as well as the tallest hotel - in Dubai, there's always a new adventure to be had.





A vibrant neighborhood with brilliant architecture and natural beauty - Jumierah Village Circle. A residential community located in the heart of Dubai, offering a family-friendly, suburban lifestyle. The park city with more than 30 land-scaped parks, the best dining, entertainment, schools, healthcare, fitness centres and more are at your fingertips, while the quiet and tranquil green space are only steps away, right in front of your residence.

This is where Meteora Developers is building some of the finest places to stay, putting you just steps from many of New Dubai's most iconic landmarks.

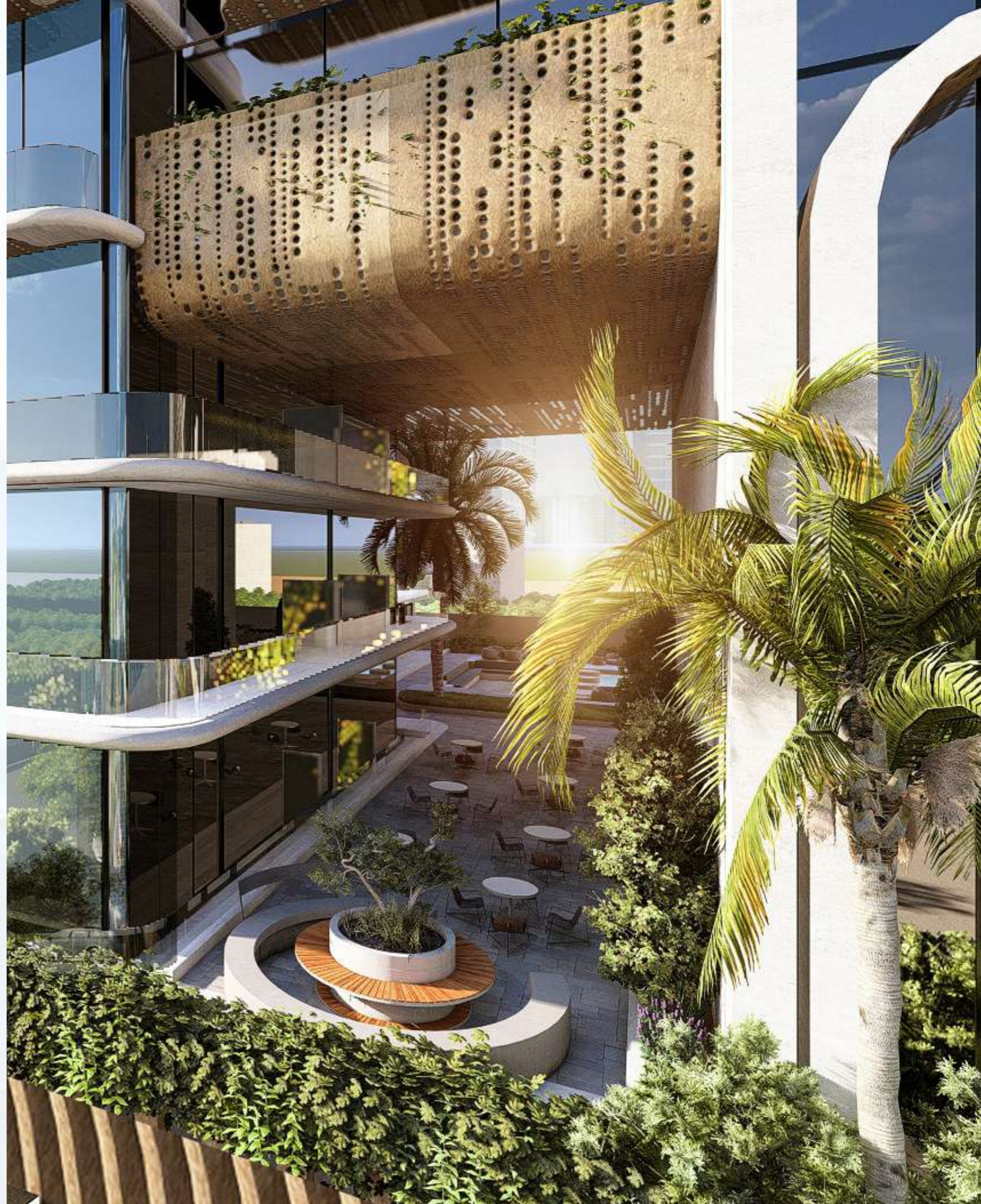
Life in the Middle of the World's Greatest City

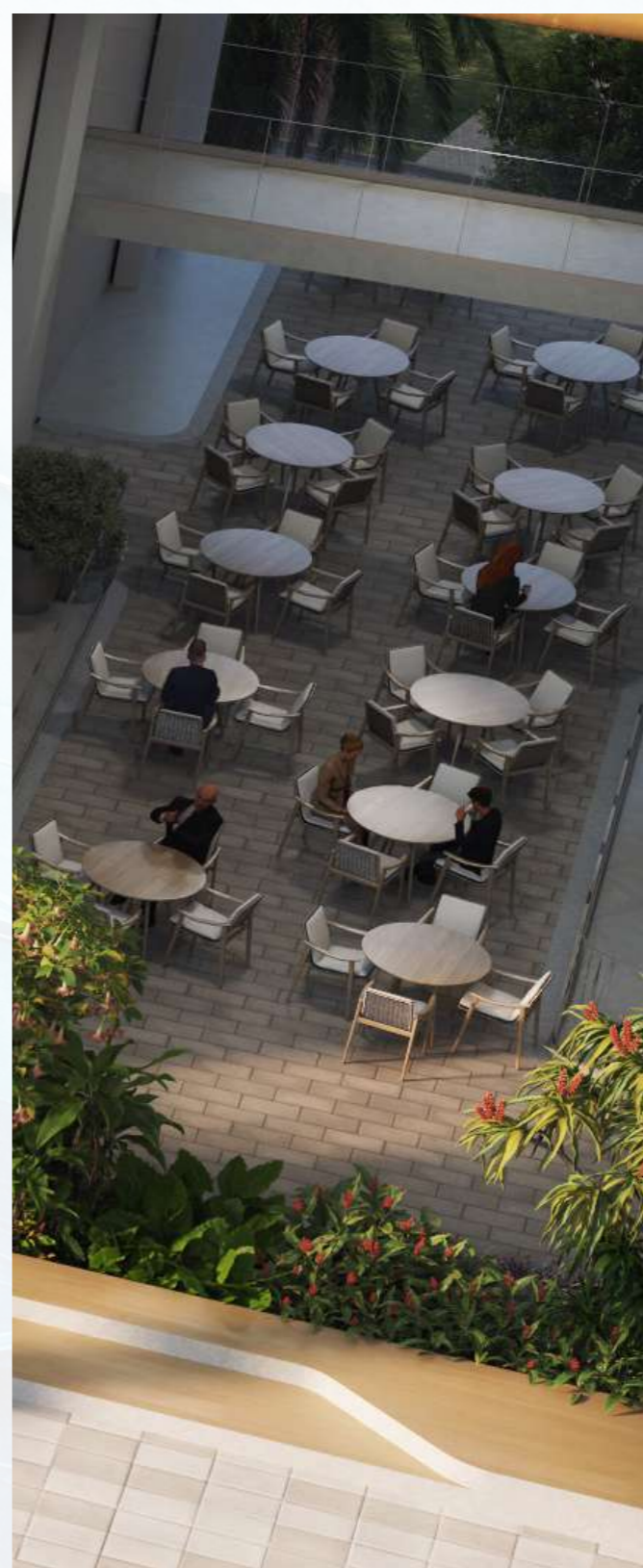
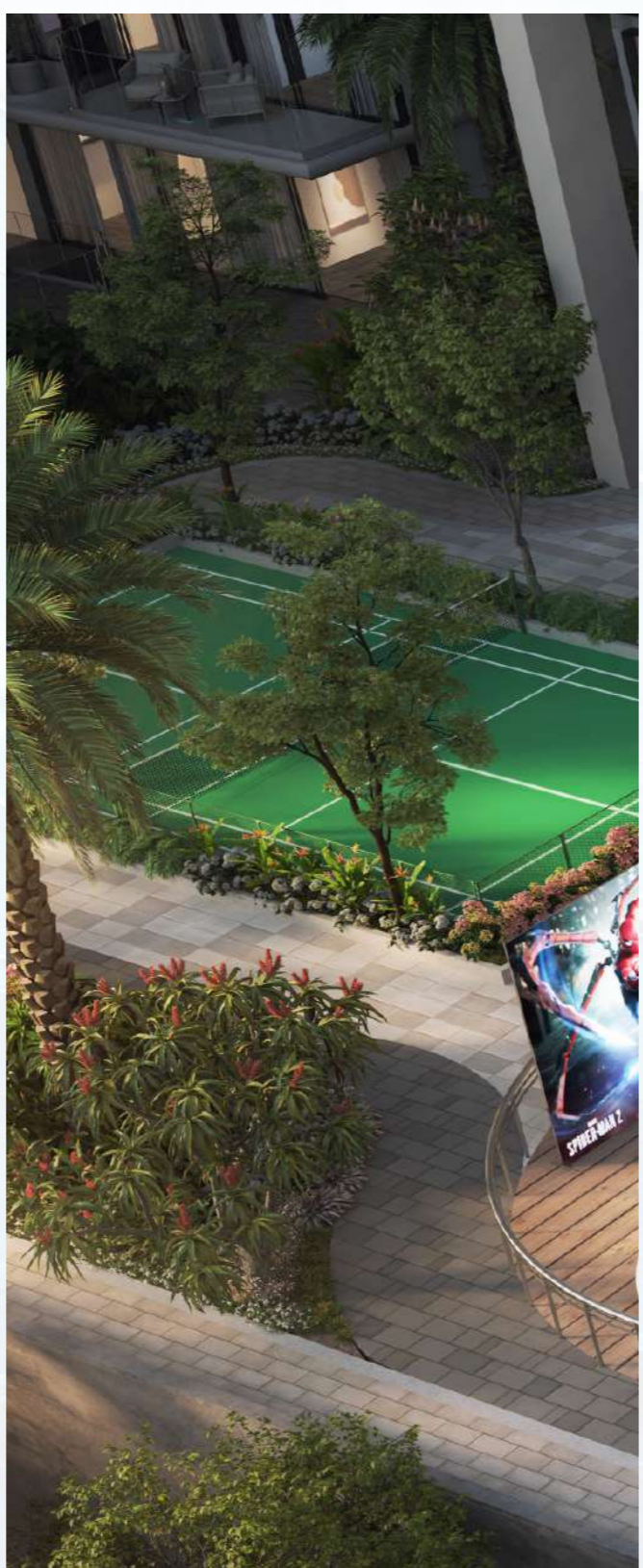
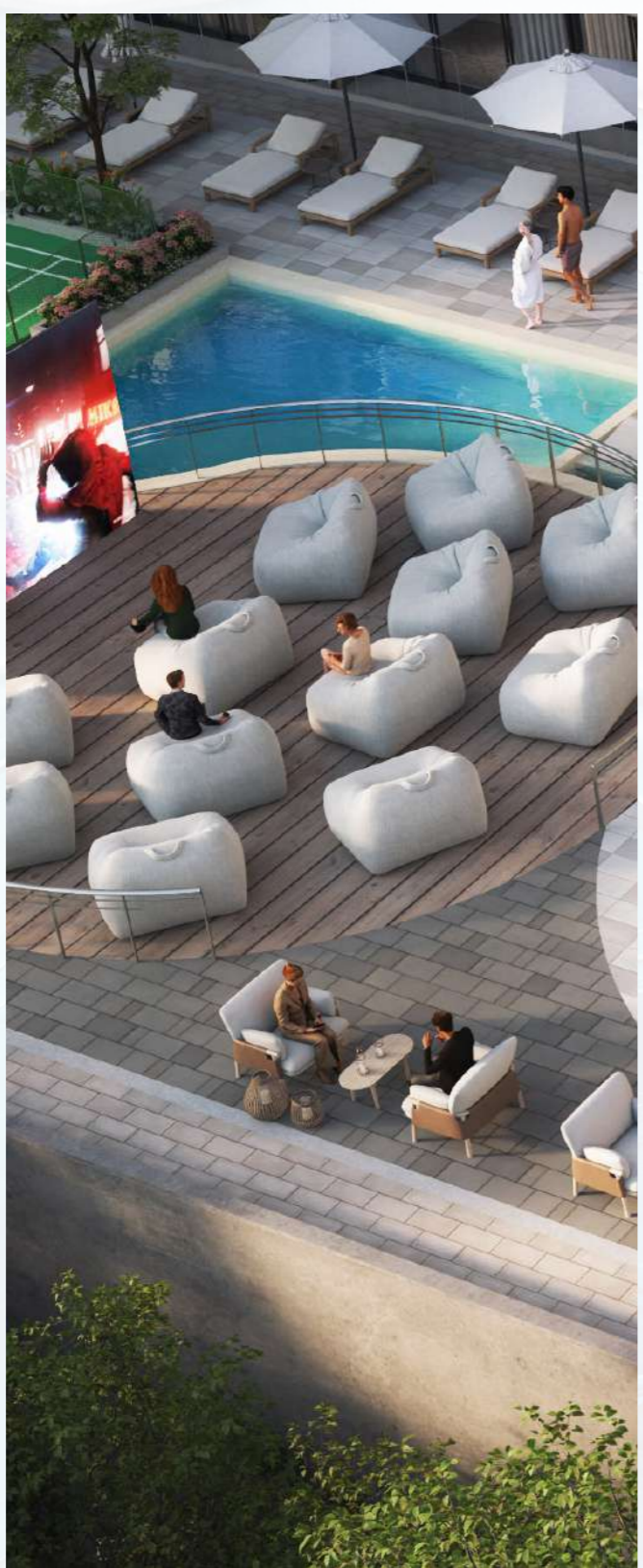
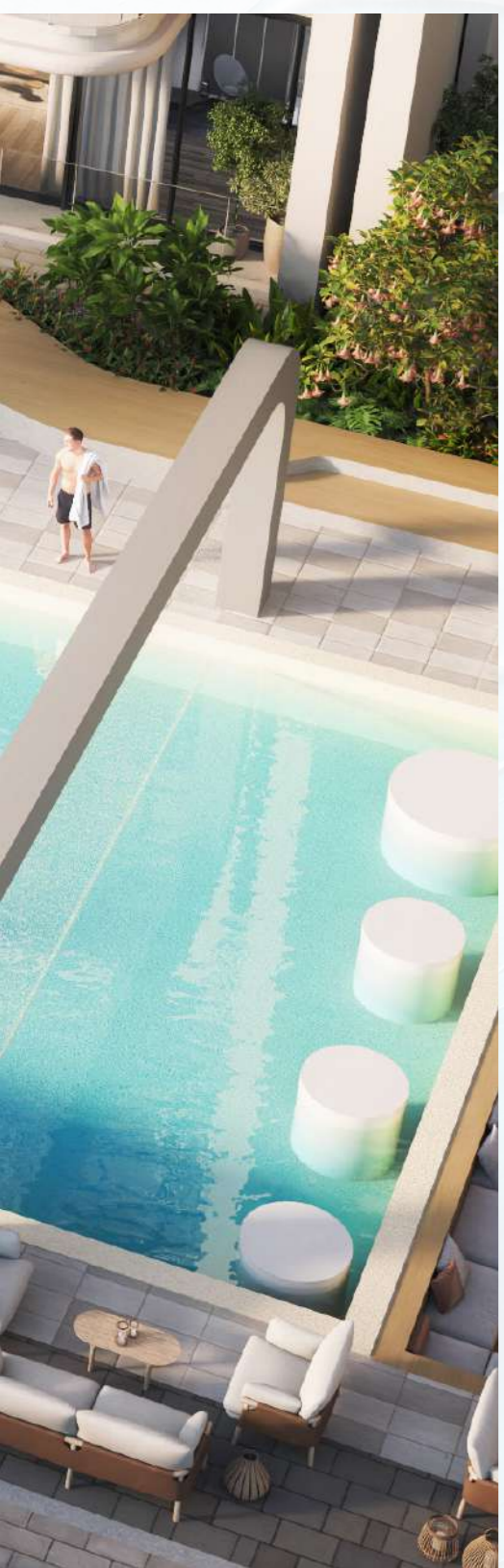


*Something special and distinct;
Design that is effortless, elegant, individual;
The right step into a life what we all seek;
The beginning of a new world;
The world of Elite choices -
This is Vivanti*





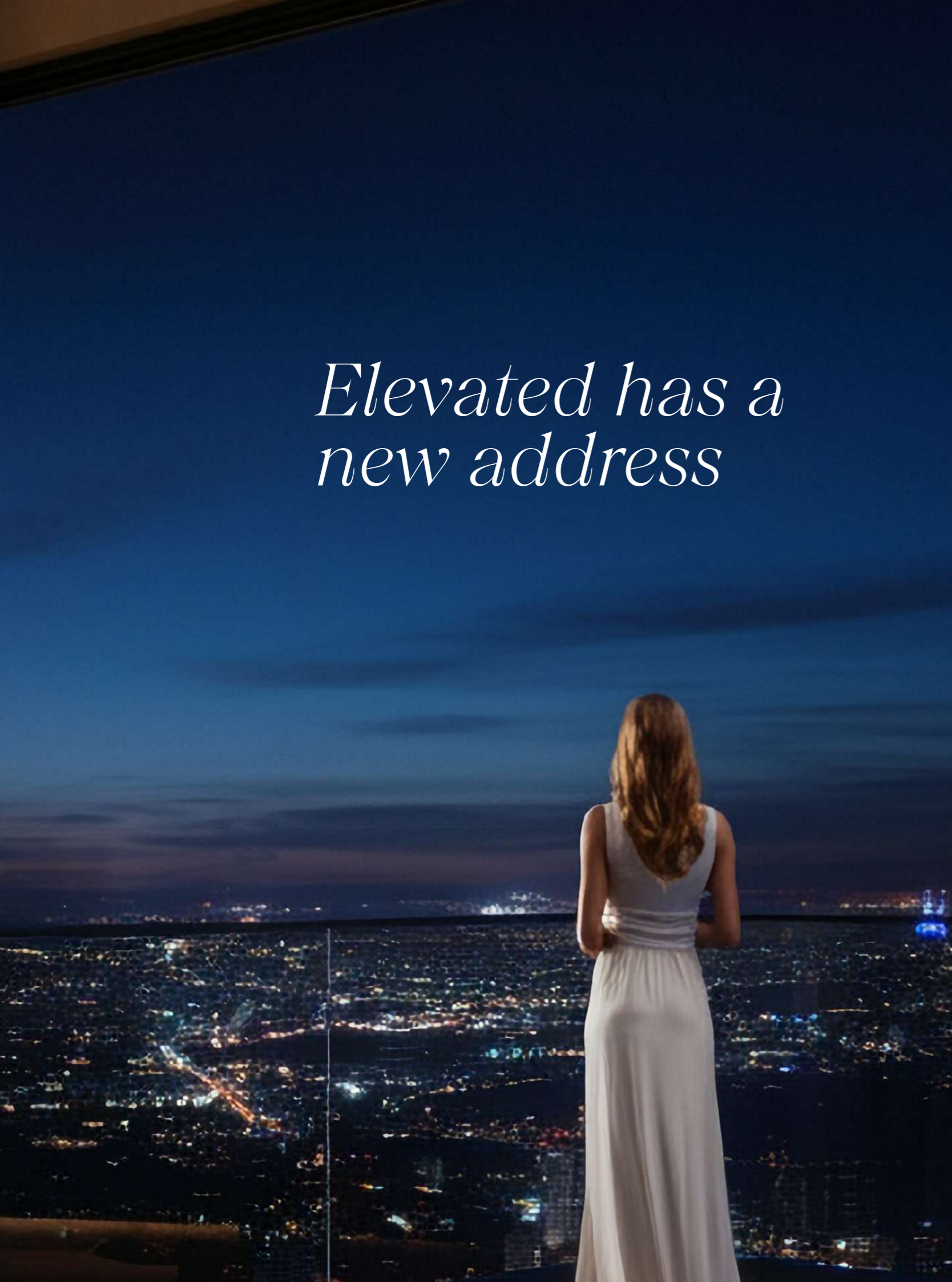




*Elevated has a
new address*

Meteora Developers' distinctive vision comes to life in this masterfully designed enclave, where architectural brilliance meets effortless sophistication. Thoughtfully curated spaces and boutique-inspired amenities converge to create an ambiance reminiscent of the world's most exclusive retreats.

Far beyond the conventional, this is a sanctuary where home becomes an eternal escape - an intimate retreat where everyday moments are elevated to the realm of the extraordinary.



VIVANTI

RESIDENCES BY METEORA

The residences at Vivanti were meticulously crafted by the designers and architects at Meteora Developers, blending minimalist design elements with a warm aesthetic and offering panoramic views of Jumeirah Village Circle on one side and the meticulously planned courtyard on the other.

SMART HOMES / AIR PURIFIED ENVIRONMENT / EV CHARGING / FULLY FITTED KITCHEN / WHITE GOODS / CONCIERGE SERVICE / DOCTOR ON CALL / PHARMACY / OUTDOOR CINEMA / CAFE / SUPERMARKET / OUTDOOR PLAY AREA / PADDLE COURT / EXPANSIVE LOUNGE AREA / PETS AREA / KIDS SWIMMING POOL / ADULTS SWIMMING POOL / GYM / DEDICATED RETAIL LEVEL

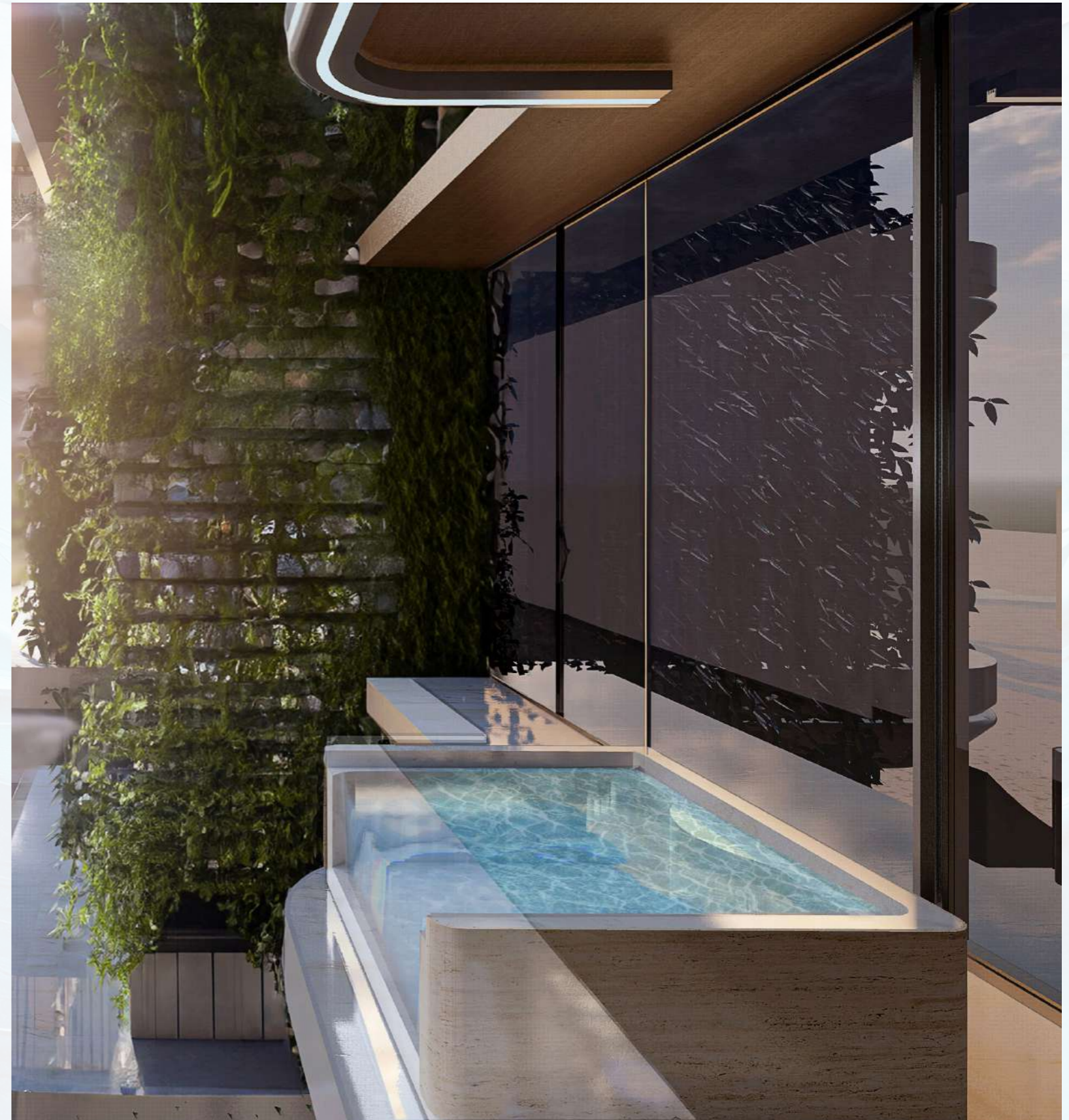


A state-of-the-art combination of panoramic views, exceptional architecture, gracious layouts, and hotel-style service makes Vivanti the ultimate urban residence.

With expansive dimensions, walls of glass, and soaring ceiling heights, each home graciously accommodates gatherings - both large and small.



Indulge in the bliss of your private escape within these beautifully designed and spacious living spaces that offer breathtaking panoramic views while you soak in the wellness from your private terrace jacuzzi.



The courtyard at Vivanti is designed for the ultimate in relaxation and regeneration and features a 32 metre swimming pool, an outdoor cinema, mini golf, kids play area and more.



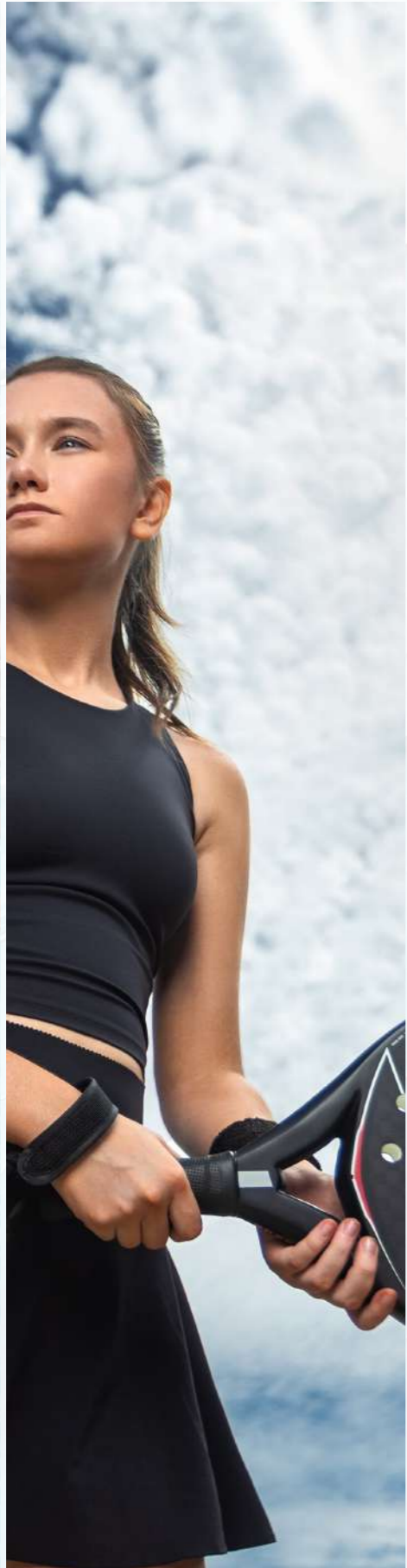
With an expansive square feet of amenities, Vivanti is a collection of incredible lifestyle amenities with the added convenience of concierge services and a full-time doorman. Vivanti offers resident's access to a landscaped podium level garden along with an outdoor children's play area and game room, all with unobstructed views of the JVC skyline.



A seamless extension of Vivanti's elevated living, the retail experience at ground level transforms daily convenience into a refined indulgence. Strategically positioned on a prominent corner, this elegant collection of establishments enhances the rhythm of everyday life. Nestled at a prime corner plot, This retail level hosts an elegant selection of establishments, including a refined cafe, a fully stocked convenience store, and a premium pharmacy.



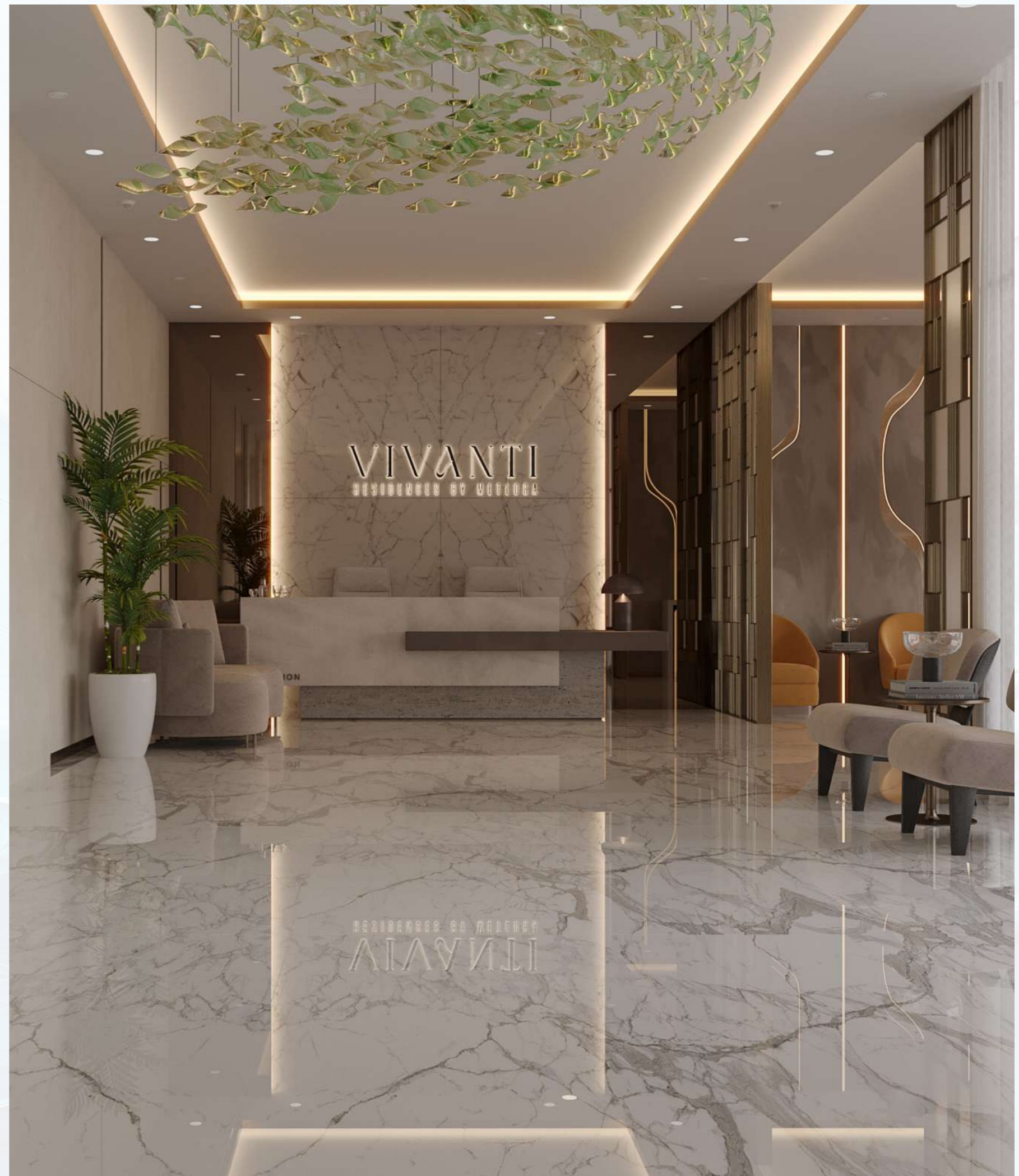
Leisure at Vivanti is an invitation to indulge, whether in motion or in stillness. A sprawling swimming pool glistens under the sun, setting the stage for refreshing escapes, while the paddle cum tennis court brings sport and sophistication together. Young adventurers delight in dedicated indoor and outdoor play spaces, each designed to inspire creativity and joy. The fully equipped gym caters to those who seek strength and serenity, while basketball hoops and a charming mini golf course provide playful diversions. As twilight sets in, the outdoor cinema comes to life, offering an enchanting retreat under the stars.



Residences

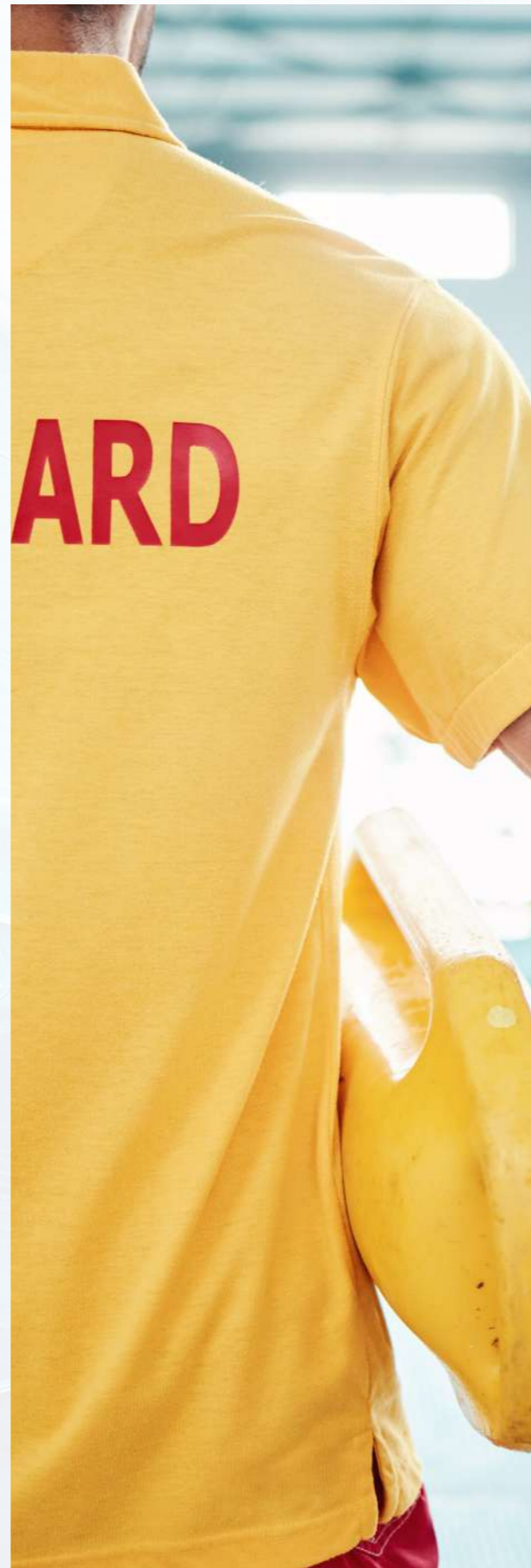
The residences offer impressive views of the neighbourhood and landmark locations of JVC. Living rooms and bedrooms are configured to maximize the outstanding views. With an open-concept layout enhanced by floor-to-ceiling windows and stunning views in select residences, it truly feels like you're on top of the world and you are.

From sunrise, throughout the day and as the sun sets, the changing urban landscape provides a striking backdrop to daily life.





Seamless living is second nature at Vivanti, where a suite of refined services redefines everyday ease. The concierge is a constant presence, ensuring that every need is anticipated and fulfilled with effortless grace. A doctor-on-call offers residents peace of mind, while an experienced lifeguard provides an added layer of security at the stunning poolside retreat. A highly skilled security team maintains an unwavering watch, preserving the serenity that defines Vivanti. Designed for modern living, electric charging stations cater to the eco-conscious, aligning sustainability with sophistication in a way that is both intuitive and elegant.

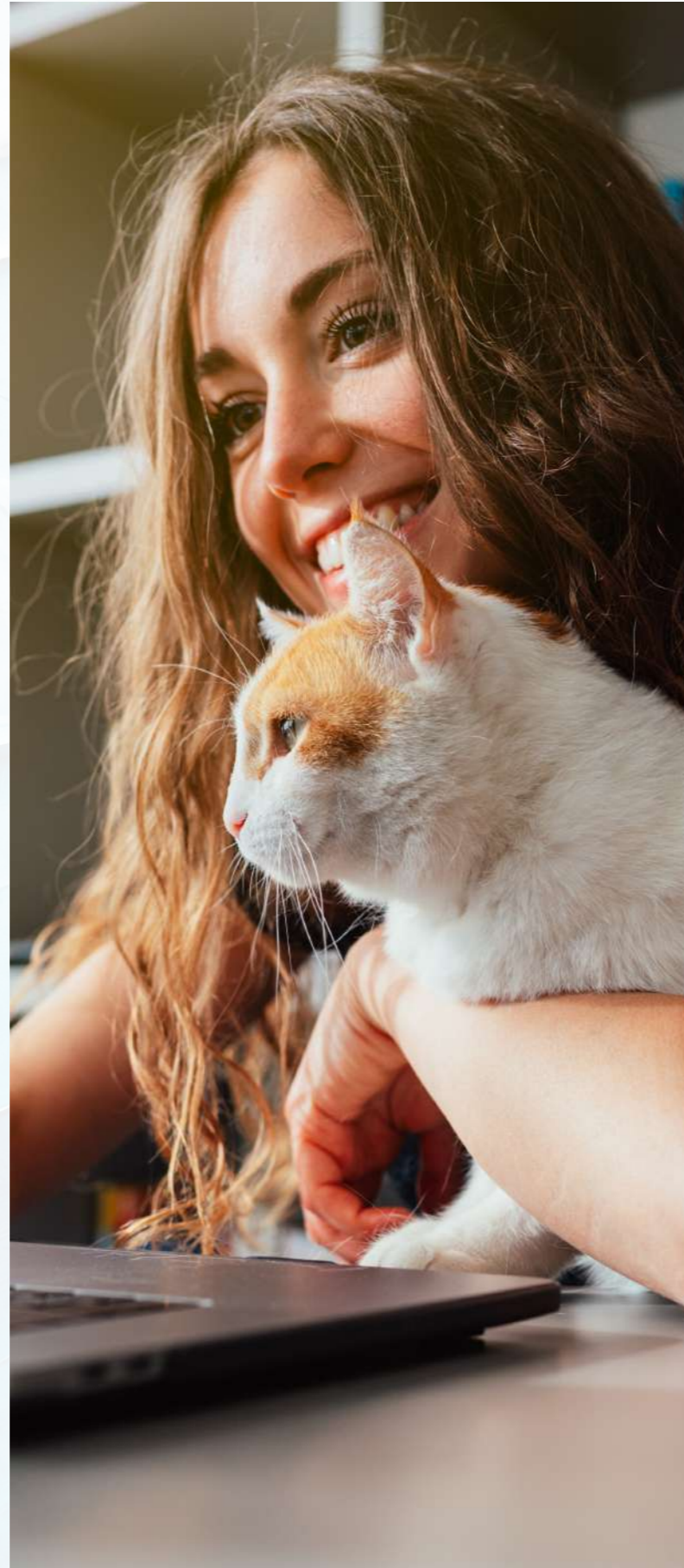




Featured: Show apartment of Vivanti Residences.
Visit the show apartment at the Meteora Sales and
Experience Centre at Jumeirah Village Circle.



Designed to inspire comfort and convenience, Vivanti offers a lifestyle where innovation and thoughtful design merge effortlessly. Smart home automation ensures seamless control over lighting, climate, and security, crafting an effortless living experience. An advanced air purification system envelops residents in freshness, creating a home that nurtures well-being. Catering to pet lovers, a dedicated pet area brings a sense of joy and inclusivity to this prestigious address. In the kitchen, sleek white goods by renowned brands elevate everyday functionality into an experience of refinement, ensuring that every detail speaks to the art of elevated living.







Upper kitchen cabinets in a dark grey finish, featuring a minimalist design with no visible handles. A stainless steel range hood is integrated into the cabinetry.

A decorative arrangement of yellow and red flowers in a white ceramic vase, placed on the countertop to the left of the stove.

Two square electrical outlets mounted on the grey marble backsplash wall.

A white ceramic container holding several gold-colored kitchen utensils, including a spoon and a spatula.

Two square electrical outlets mounted on the grey marble backsplash wall to the right of the stove.

A stainless steel gas cooktop with four burners, integrated into the countertop.

A built-in stainless steel oven with a glass door and a silver handle, integrated into the lower cabinetry.


A built-in front-loading washing machine with a stainless steel door and a silver handle, integrated into the lower cabinetry on the left side.

A white marble countertop with a thick, polished edge, extending from the left side of the kitchen.

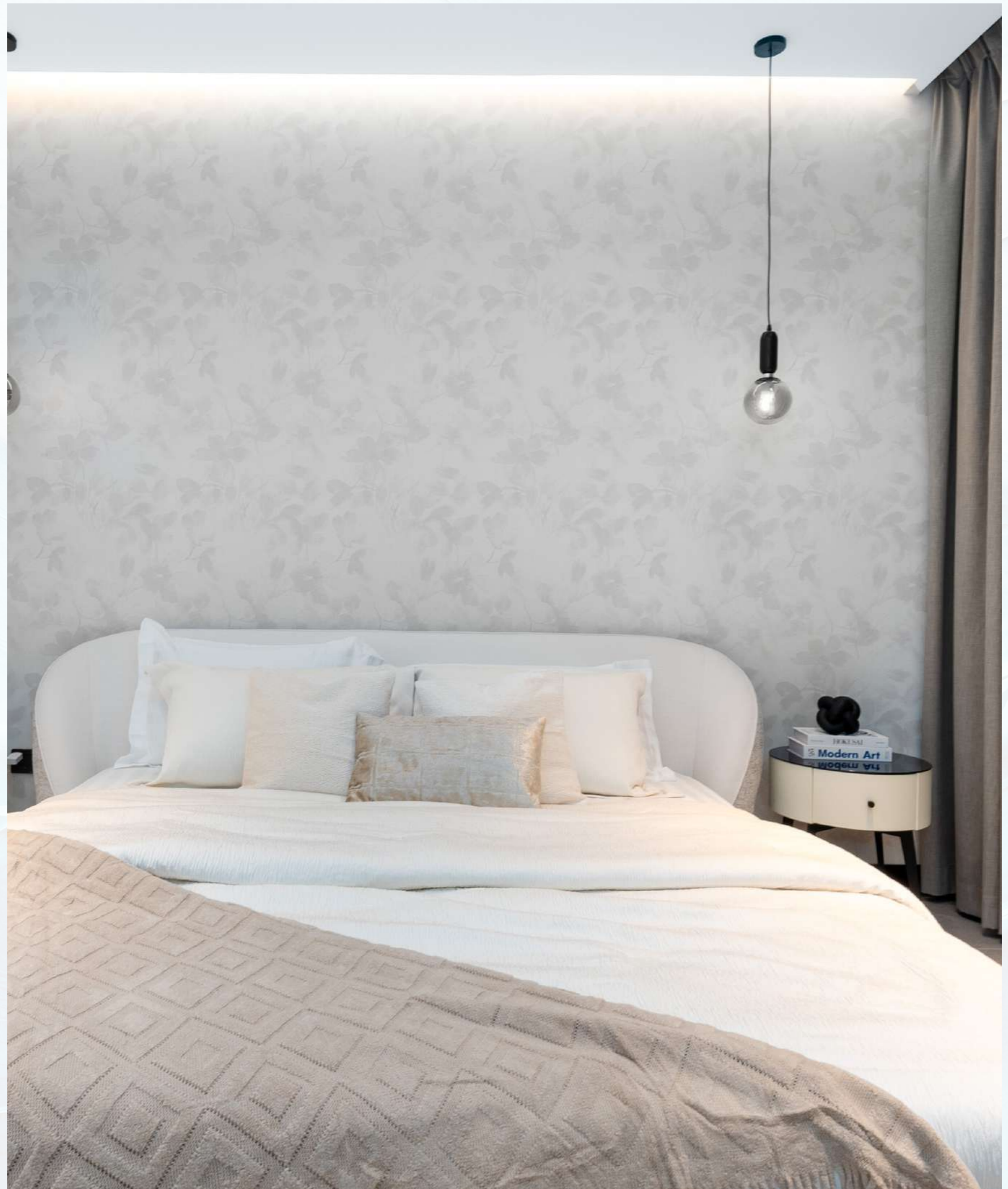
Large, light grey rectangular floor tiles with a subtle marble pattern, laid in a grid pattern.

Lower kitchen cabinets in a light grey finish, featuring a minimalist design with black handles. A white cabinet door is visible on the far right.



A high-angle photograph of a man and a woman lying in bed together. The man is at the top of the frame, wearing a white t-shirt, with his arms raised and a smile on his face. The woman is in the foreground, wearing a white tank top, with her eyes closed and a gentle smile. They are holding hands. The bed is covered with white linens and has a tufted headboard. A pair of blue jeans is visible on the right side of the bed.

A masterful composition of elegance and function, the bedroom at Vivanti is designed to be the ultimate personal sanctuary. A palette of soft, calming tones, plush finishes, and ambient lighting creates an atmosphere of absolute serenity. The ensuite bathroom transforms daily rituals into moments of indulgence, featuring exquisite materials, spa-inspired fixtures, and a design that seamlessly balances functionality with opulence. With ample storage solutions discreetly integrated into the design, every inch of the space promotes order, tranquility, and a sense of effortless sophistication—allowing you to wake up refreshed and embrace each day anew.











Embracing Your Passion to Stay Closer

At Meteora Developers, we share your passion for sports, music and the arts. While we have been building homes with elevated privileges, we have keenly supported these interests and contributed to making your communities more vibrant.

This has helped us bring our worlds together, stay connected and remain closer to you. While we continue to support world class sporting events, musical evenings and art exhibitions through our sub-brand 'Meteora Developers Presents', we are also equally excited to launch more homes with 'Elevated Privileges'!

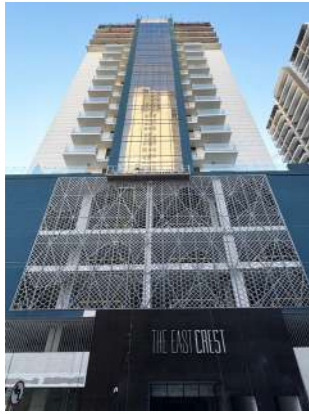


It's time to step in

It takes a dynamic team with a strong vision, deep insight, and flawless execution to create a fresh, affordable, yet perfectly elegant and exclusive environment within the context of Jumeirah Village Circle.

The collaborative innovators behind the Vivanti Residences have worked in great synergy to breathe life into several exceptional properties in JVC, down to the last subtle detail.

We are also glad to announce the handover of The East Crest and 7 Park Central along with this new property launch at JVC.



HANDOVER: Q1 2025

THE EAST CREST

HANDOVER: Q1 2025

7 PARK CENTRAL

HANDOVER: Q3 2025

VITA GRANDE

HANDOVER: Q4 2026

PARK BOULEVARD



Access

Jumeirah Village Circle is a world within itself, but right outside, all of Dubai is at your fingertips. JVC's pivotal location makes experiencing Dubai easy. Touted as Dubai's first ever Village Neighbourhood, Jumeirah Village Circle sits next to Jumeirah Village Triangle, Al Barsha South, Dubai Sports City and Motor City - right in the heart of what is often referred to as the New Dubai, built as the ultimate landscape of society, culture and commerce.

In the Community

SCHOOLS

Kids World Nursery
Ladybird Nursery

HOSPITALS/ CLINICS

Magnum Family Medical Centre
Right Health Karama Medical Centre

SUPERMARKETS

Spinneys
Choitrams
West Zone Fresh
Aswaaq Mart
All Day MiniMart
Holiday Minimart

SHOPPING

Circle Mall

In the Neighbourhood

SCHOOLS

Gems United - Dubai Sports City - 5 Mins
Nord Anglia - Al Barsha South - 5 Mins
Gems World Academy - Al Barsha South - 5 Mins
Dubai British School - Emirates Hills - 7 Mins
Dubai International Academy - Emirates Hills - 7 Mins

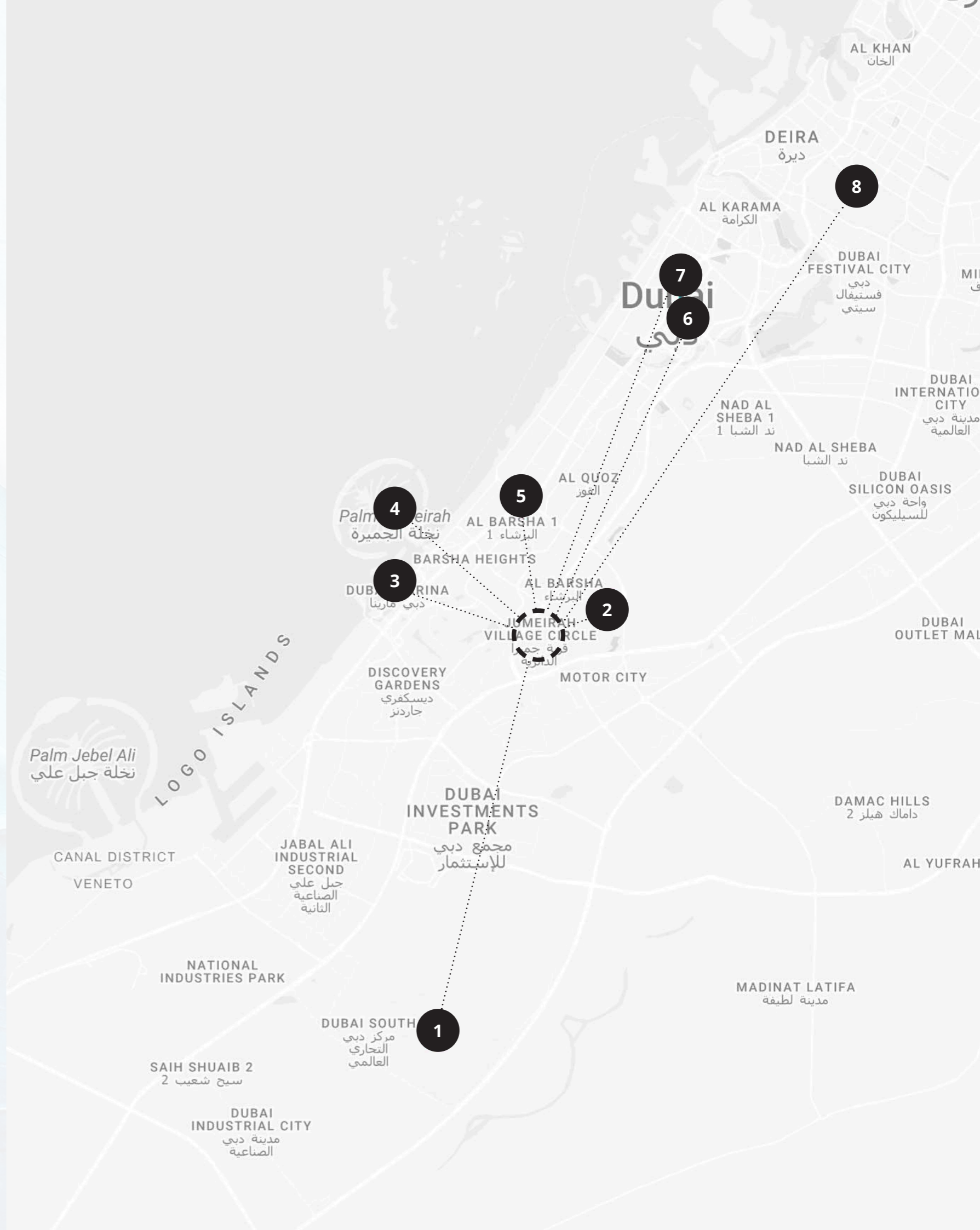
MALLS

Al Khail Avenue Mall - JVC - 2 Mins
Mall of the Emirates - Al Barsha 1 - 15 Mins
Al Barsha Mall - Al Barsha 2 - 7 Mins
City Centre Al Barsha - Al Barsha South - 5 Mins

HOSPITALS / CLINICS

Emirates Hospital Day Surgery - Motor City - 5 Mins
Mediclinic Park View Hospital - Al Barsha South - 5 Mins
Saudi German Hospital - Al Barsha South - 5 Mins

- ① AL MAKTOUM INTERNATIONAL AIRPORT **15 MINUTES**
- ② MY CITY CENTRE AL BARSHA **10 MINUTES**
- ③ DUBAI MARINA **10 MINUTES**
- ④ PALM JUMEIRAH **20 MINUTES**
- ⑤ MALL OF THE EMIRATES **15 MINUTES**
- ⑥ DUBAI MALL **12 MINUTES**
- ⑦ DIFC **12 MINUTES**
- ⑧ DUBAI INTERNATIONAL AIRPORT **15 MINUTES**



Floor Plans



01

FLOOR

- 1 BEDROOM APARTMENT
- 2 BEDROOM APARTMENT
- 3 BEDROOM APARTMENT
- STUDIO APARTMENT

BLOCK A
101, 102, 103, 104, 105,
106, 107, 108, 109, 110,
111, 112

BLOCK B
101, 102, 103, 104, 105,
106, 107, 108, 109, 110

BLOCK C
101, 102, 103, 104, 105,
106, 107, 108, 109, 110,
111, 112, 113
UNITS



02

FLOOR

- 1 BEDROOM APARTMENT
- 2 BEDROOM APARTMENT
- 3 BEDROOM APARTMENT
- STUDIO APARTMENT

BLOCK A
201, 202, 203, 204,
205, 206, 207, 208,
209, 210, 211, 212, 213

BLOCK B
201, 202, 203, 204,
205, 206, 207, 208,
209, 210

BLOCK C
201, 202, 203, 204,
205, 206, 207, 208,
209, 210, 211, 212, 213
UNITS



Disclaimer: 1. All room dimensions are measured to structural elements and exclude wall finishes and construction tolerances. 2. All dimensions have been provided by our consultant architects. 3. All materials, dimensions and drawings are approximate. Information is subject to change without notice. 4. Actual suite area may vary from the stated area. Drawings not to scale. The developer reserves the right to make revisions. 5. Calculation of suite area is measured as the area bounded by the centre line of demising or partition walls separating one unit from another unit, the exterior face of all exterior walls, and the exterior face of the corridor wall enclosing the adjoining unit. 6. Calculation of balcony area is measured as the area bounded by the centre line of demising or partition walls separating one unit from another unit, the outmost face of the enclosing guard and the external face of the adjoining balcony. 7. The units are measured at typical floor in the building. Columns may vary in size depending on the floor level. 8. For each unit type, unit sizes and details might be slightly different. Please refer to the sales and purchase agreement for the actual size of each specific unit.

Disclaimer: 1. All room dimensions are measured to structural elements and exclude wall finishes and construction tolerances. 2. All dimensions have been provided by our consultant architects. 3. All materials, dimensions and drawings are approximate. Information is subject to change without notice. 4. Actual suite area may vary from the stated area. Drawings not to scale. The developer reserves the right to make revisions. 5. Calculation of suite area is measured as the area bounded by the centre line of demising or partition walls separating one unit from another unit, the exterior face of all exterior walls, and the exterior face of the corridor wall enclosing the adjoining unit. 6. Calculation of balcony area is measured as the area bounded by the centre line of demising or partition walls separating one unit from another unit, the outmost face of the enclosing guard and the external face of the adjoining balcony. 7. The units are measured at typical floor in the building. Columns may vary in size depending on the floor level. 8. For each unit type, unit sizes and details might be slightly different. Please refer to the sales and purchase agreement for the actual size of each specific unit.

03

FLOOR

BLOCK A
301, 302, 303, 304,
305, 306, 307, 308,
309, 310, 311, 312, 313

BLOCK B
301, 302, 303, 304,
305, 306, 307, 308,
309, 310

BLOCK C
301, 302, 303, 304,
305, 306, 307, 308,
309, 310, 311, 312, 313
UNITS

- 1 BEDROOM APARTMENT
- 2 BEDROOM APARTMENT
- 3 BEDROOM APARTMENT
- STUDIO APARTMENT



04

FLOOR

BLOCK A
401, 402, 403, 404,
405, 406, 407, 408,
409, 410, 411, 412,
413, 414, 415

BLOCK B
401, 402, 403, 404,
405, 406, 407, 408,
409, 410

BLOCK C
401, 402, 403, 404,
405, 406, 407, 408,
409, 410, 411, 412,
413, 414, 415
UNITS

- 1 BEDROOM APARTMENT
- 2 BEDROOM APARTMENT
- 3 BEDROOM APARTMENT
- STUDIO APARTMENT



Disclaimer: 1. All room dimensions are measured to structural elements and exclude wall finishes and construction tolerances. 2. All dimensions have been provided by our consultant architects. 3. All materials, dimensions and drawings are approximate. Information is subject to change without notice. 4. Actual suite area may vary from the stated area. Drawings not to scale. The developer reserves the right to make revisions. 5. Calculation of suite area is measured as the area bounded by the centre line of demising or partition walls separating one unit from another unit, the exterior face of all exterior walls, and the exterior face of the corridor wall enclosing the adjoining unit. 6. Calculation of balcony area is measured as the area bounded by the centre line of demising or partition walls separating one unit from another unit, the outmost face of the enclosing guard and the external face of the adjoining balcony. 7. The units are measured at typical floor in the building. Columns may vary in size depending on the floor level. 8. For each unit type, unit sizes and details might be slightly different. Please refer to the sales and purchase agreement for the actual size of each specific unit.

Disclaimer: 1. All room dimensions are measured to structural elements and exclude wall finishes and construction tolerances. 2. All dimensions have been provided by our consultant architects. 3. All materials, dimensions and drawings are approximate. Information is subject to change without notice. 4. Actual suite area may vary from the stated area. Drawings not to scale. The developer reserves the right to make revisions. 5. Calculation of suite area is measured as the area bounded by the centre line of demising or partition walls separating one unit from another unit, the exterior face of all exterior walls, and the exterior face of the corridor wall enclosing the adjoining unit. 6. Calculation of balcony area is measured as the area bounded by the centre line of demising or partition walls separating one unit from another unit, the outmost face of the enclosing guard and the external face of the adjoining balcony. 7. The units are measured at typical floor in the building. Columns may vary in size depending on the floor level. 8. For each unit type, unit sizes and details might be slightly different. Please refer to the sales and purchase agreement for the actual size of each specific unit.

05

FLOOR

BLOCK A
501, 502, 503, 504,
505, 506, 507, 508,
509, 510, 511, 512,
513, 514, 515

BLOCK B
501, 502, 503, 504,
505, 506, 507, 508,
509, 510

BLOCK C
501, 502, 503, 504,
505, 506, 507, 508,
509, 510, 511, 512,
513, 514, 515
UNITS

- 1 BEDROOM APARTMENT
- 2 BEDROOM APARTMENT
- 3 BEDROOM APARTMENT
- STUDIO APARTMENT



PODIUM +
SWIMMING
POOL



MAIN ROAD

06

FLOOR

BLOCK A
601, 602, 603, 604,
605, 606, 607, 608,
609, 610, 611, 612,
613, 614, 615

BLOCK B
601, 602, 603, 604,
605, 606, 607, 608,
609, 610

BLOCK C
601, 602, 603, 604,
605, 606, 607, 608,
609, 610, 611, 612,
613, 614, 615
UNITS

- 1 BEDROOM APARTMENT
- 2 BEDROOM APARTMENT
- 3 BEDROOM APARTMENT
- STUDIO APARTMENT



PODIUM +
SWIMMING
POOL



MAIN ROAD

Disclaimer: 1. All room dimensions are measured to structural elements and exclude wall finishes and construction tolerances. 2. All dimensions have been provided by our consultant architects. 3. All materials, dimensions and drawings are approximate. Information is subject to change without notice. 4. Actual suite area may vary from the stated area. Drawings not to scale. The developer reserves the right to make revisions. 5. Calculation of suite area is measured as the area bounded by the centre line of demising or partition walls separating one unit from another unit, the exterior face of all exterior walls, and the exterior face of the corridor wall enclosing the adjoining unit. 6. Calculation of balcony area is measured as the area bounded by the centre line of demising or partition walls separating one unit from another unit, the outmost face of the enclosing guard and the external face of the adjoining balcony. 7. The units are measured at typical floor in the building. Columns may vary in size depending on the floor level. 8. For each unit type, unit sizes and details might be slightly different. Please refer to the sales and purchase agreement for the actual size of each specific unit.

Disclaimer: 1. All room dimensions are measured to structural elements and exclude wall finishes and construction tolerances. 2. All dimensions have been provided by our consultant architects. 3. All materials, dimensions and drawings are approximate. Information is subject to change without notice. 4. Actual suite area may vary from the stated area. Drawings not to scale. The developer reserves the right to make revisions. 5. Calculation of suite area is measured as the area bounded by the centre line of demising or partition walls separating one unit from another unit, the exterior face of all exterior walls, and the exterior face of the corridor wall enclosing the adjoining unit. 6. Calculation of balcony area is measured as the area bounded by the centre line of demising or partition walls separating one unit from another unit, the outmost face of the enclosing guard and the external face of the adjoining balcony. 7. The units are measured at typical floor in the building. Columns may vary in size depending on the floor level. 8. For each unit type, unit sizes and details might be slightly different. Please refer to the sales and purchase agreement for the actual size of each specific unit.

07

FLOOR

BLOCK A
701, 702, 703, 704,
705, 706, 707, 708,
709, 710, 711, 712, 713,
714, 715

BLOCK B
701, 702, 703, 704,
705, 706, 707, 708,
709, 710

BLOCK C
701, 702, 703, 704,
705, 706, 707, 708,
709, 710, 711, 712, 713,
714, 715
UNITS

- 1 BEDROOM APARTMENT
- 2 BEDROOM APARTMENT
- 3 BEDROOM APARTMENT
- STUDIO APARTMENT



PODIUM +
SWIMMING
POOL



MAIN ROAD

08

FLOOR

BLOCK A
801, 802, 803, 804,
805, 806, 807, 808,
809, 810, 811, 812,
813, 814, 815

BLOCK B
801, 802, 803, 804,
805, 806, 807, 808,
809, 810

BLOCK C
801, 802, 803, 804,
805, 806, 807, 808,
809, 810, 811, 812,
813, 814, 815
UNITS

- 1 BEDROOM APARTMENT
- 2 BEDROOM APARTMENT
- 3 BEDROOM APARTMENT
- STUDIO APARTMENT



PODIUM +
SWIMMING
POOL



MAIN ROAD

Disclaimer: 1. All room dimensions are measured to structural elements and exclude wall finishes and construction tolerances. 2. All dimensions have been provided by our consultant architects. 3. All materials, dimensions and drawings are approximate. Information is subject to change without notice. 4. Actual suite area may vary from the stated area. Drawings not to scale. The developer reserves the right to make revisions. 5. Calculation of suite area is measured as the area bounded by the centre line of demising or partition walls separating one unit from another unit, the exterior face of all exterior walls, and the exterior face of the corridor wall enclosing the adjoining unit. 6. Calculation of balcony area is measured as the area bounded by the centre line of demising or partition walls separating one unit from another unit, the outmost face of the enclosing guard and the external face of the adjoining balcony. 7. The units are measured at typical floor in the building. Columns may vary in size depending on the floor level. 8. For each unit type, unit sizes and details might be slightly different. Please refer to the sales and purchase agreement for the actual size of each specific unit.

Disclaimer: 1. All room dimensions are measured to structural elements and exclude wall finishes and construction tolerances. 2. All dimensions have been provided by our consultant architects. 3. All materials, dimensions and drawings are approximate. Information is subject to change without notice. 4. Actual suite area may vary from the stated area. Drawings not to scale. The developer reserves the right to make revisions. 5. Calculation of suite area is measured as the area bounded by the centre line of demising or partition walls separating one unit from another unit, the exterior face of all exterior walls, and the exterior face of the corridor wall enclosing the adjoining unit. 6. Calculation of balcony area is measured as the area bounded by the centre line of demising or partition walls separating one unit from another unit, the outmost face of the enclosing guard and the external face of the adjoining balcony. 7. The units are measured at typical floor in the building. Columns may vary in size depending on the floor level. 8. For each unit type, unit sizes and details might be slightly different. Please refer to the sales and purchase agreement for the actual size of each specific unit.

09

FLOOR

BLOCK A
901, 902, 903, 904,
905, 906, 907, 908,
909, 910, 911, 912,
913, 914, 915

BLOCK B
901, 902, 903, 904,
905, 906, 907, 908,
909, 910

BLOCK C
901, 902, 903, 904,
905, 906, 907, 908,
909, 910, 911, 912,
913, 914, 915
UNITS

- 1 BEDROOM APARTMENT
- 2 BEDROOM APARTMENT
- 3 BEDROOM APARTMENT
- STUDIO APARTMENT



10

FLOOR

BLOCK A
1001, 1002, 1003,
1004, 1005, 1006,
1007, 1008, 1009,
1010, 1011, 1012, 1013,
1014, 1015

BLOCK B
1001, 1002, 1003,
1004, 1005, 1006,
1007, 1008, 1009, 1010

BLOCK C
1001, 1002, 1003,
1004, 1005, 1006,
1007, 1008, 1009,
1010, 1011, 1012, 1013,
1014, 1015
UNITS

- 1 BEDROOM APARTMENT
- 2 BEDROOM APARTMENT
- 3 BEDROOM APARTMENT
- STUDIO APARTMENT



Disclaimer: 1. All room dimensions are measured to structural elements and exclude wall finishes and construction tolerances. 2. All dimensions have been provided by our consultant architects. 3. All materials, dimensions and drawings are approximate. Information is subject to change without notice. 4. Actual suite area may vary from the stated area. Drawings not to scale. The developer reserves the right to make revisions. 5. Calculation of suite area is measured as the area bounded by the centre line of demising or partition walls separating one unit from another unit, the exterior face of all exterior walls, and the exterior face of the corridor wall enclosing the adjoining unit. 6. Calculation of balcony area is measured as the area bounded by the centre line of demising or partition walls separating one unit from another unit, the outmost face of the enclosing guard and the external face of the adjoining balcony. 7. The units are measured at typical floor in the building. Columns may vary in size depending on the floor level. 8. For each unit type, unit sizes and details might be slightly different. Please refer to the sales and purchase agreement for the actual size of each specific unit.

Disclaimer: 1. All room dimensions are measured to structural elements and exclude wall finishes and construction tolerances. 2. All dimensions have been provided by our consultant architects. 3. All materials, dimensions and drawings are approximate. Information is subject to change without notice. 4. Actual suite area may vary from the stated area. Drawings not to scale. The developer reserves the right to make revisions. 5. Calculation of suite area is measured as the area bounded by the centre line of demising or partition walls separating one unit from another unit, the exterior face of all exterior walls, and the exterior face of the corridor wall enclosing the adjoining unit. 6. Calculation of balcony area is measured as the area bounded by the centre line of demising or partition walls separating one unit from another unit, the outmost face of the enclosing guard and the external face of the adjoining balcony. 7. The units are measured at typical floor in the building. Columns may vary in size depending on the floor level. 8. For each unit type, unit sizes and details might be slightly different. Please refer to the sales and purchase agreement for the actual size of each specific unit.

11

FLOOR

BLOCK A
1101, 1102, 1103, 1104,
1105, 1106, 1107, 1108,
1109, 1110, 1111, 1112,
1113, 1114, 1115

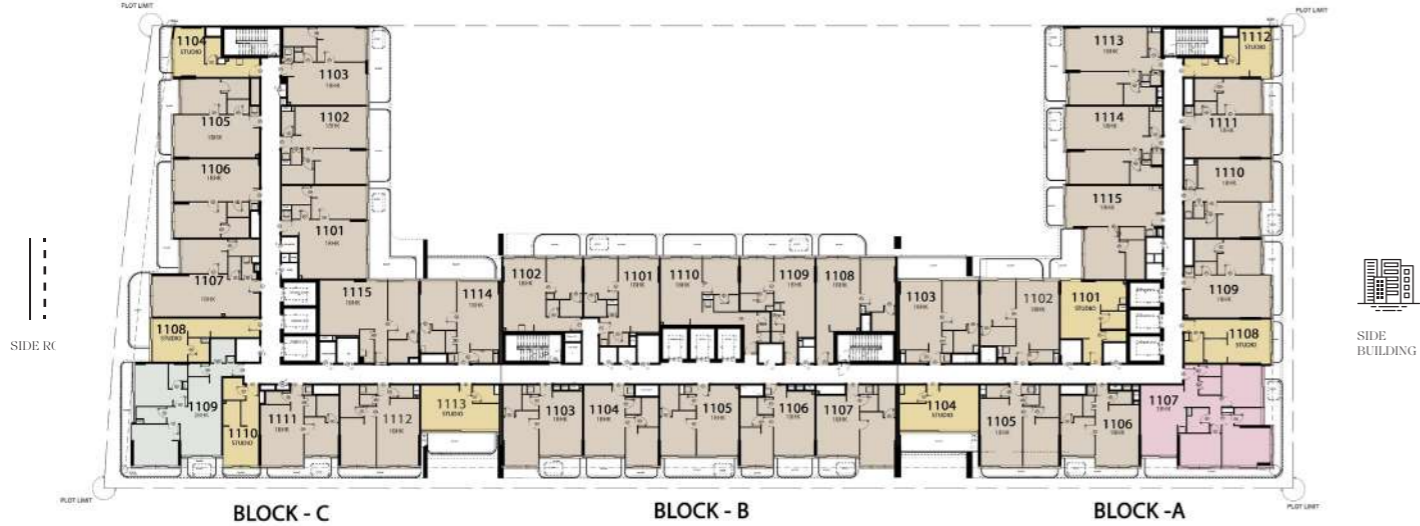
BLOCK B
1101, 1102, 1103, 1104,
1105, 1106, 1107, 1108,
1109, 1110

BLOCK C
1101, 1102, 1103, 1104,
1105, 1106, 1107, 1108,
1109, 1110, 1111, 1112,
1113, 1114, 1115
UNITS

- 1 BEDROOM APARTMENT
- 2 BEDROOM APARTMENT
- 3 BEDROOM APARTMENT
- STUDIO APARTMENT



PODIUM +
SWIMMING
POOL



MAIN ROAD

12

FLOOR

BLOCK A
1201, 1202, 1203,
1204, 1205, 1206,
1207, 1208, 1209, 1210,
1211, 1212

BLOCK B
1201, 1202, 1203,
1204, 1205, 1206,
1207, 1208, 1209, 1210

BLOCK C
1201, 1202, 1203,
1204, 1205, 1206,
1207, 1208, 1209
UNITS

- 1 BEDROOM APARTMENT
- 2 BEDROOM APARTMENT
- 3 BEDROOM APARTMENT
- STUDIO APARTMENT



PODIUM +
SWIMMING
POOL



MAIN ROAD

Disclaimer: 1. All room dimensions are measured to structural elements and exclude wall finishes and construction tolerances. 2. All dimensions have been provided by our consultant architects. 3. All materials, dimensions and drawings are approximate. Information is subject to change without notice. 4. Actual suite area may vary from the stated area. Drawings not to scale. The developer reserves the right to make revisions. 5. Calculation of suite area is measured as the area bounded by the centre line of demising or partition walls separating one unit from another unit, the exterior face of all exterior walls, and the exterior face of the corridor wall enclosing the adjoining unit. 6. Calculation of balcony area is measured as the area bounded by the centre line of demising or partition walls separating one unit from another unit, the outmost face of the enclosing guard and the external face of the adjoining balcony. 7. The units are measured at typical floor in the building. Columns may vary in size depending on the floor level. 8. For each unit type, unit sizes and details might be slightly different. Please refer to the sales and purchase agreement for the actual size of each specific unit.

Disclaimer: 1. All room dimensions are measured to structural elements and exclude wall finishes and construction tolerances. 2. All dimensions have been provided by our consultant architects. 3. All materials, dimensions and drawings are approximate. Information is subject to change without notice. 4. Actual suite area may vary from the stated area. Drawings not to scale. The developer reserves the right to make revisions. 5. Calculation of suite area is measured as the area bounded by the centre line of demising or partition walls separating one unit from another unit, the exterior face of all exterior walls, and the exterior face of the corridor wall enclosing the adjoining unit. 6. Calculation of balcony area is measured as the area bounded by the centre line of demising or partition walls separating one unit from another unit, the outmost face of the enclosing guard and the external face of the adjoining balcony. 7. The units are measured at typical floor in the building. Columns may vary in size depending on the floor level. 8. For each unit type, unit sizes and details might be slightly different. Please refer to the sales and purchase agreement for the actual size of each specific unit.

13

FLOOR

- 1 BEDROOM APARTMENT
- 2 BEDROOM APARTMENT
- 3 BEDROOM APARTMENT
- STUDIO APARTMENT

BLOCK A
1301, 1302, 1303,
1304, 1305, 1306,
1307, 1308, 1309,
1310, 1311

BLOCK B
1301, 1302, 1303,
1304, 1305, 1306,
1307, 1308, 1309, 1310

BLOCK C
1301, 1302, 1303,
1304, 1305, 1306,
1307, 1308
UNITS



PODIUM +
SWIMMING
POOL



MAIN ROAD

14

FLOOR

- 1 BEDROOM APARTMENT
- 2 BEDROOM APARTMENT
- 3 BEDROOM APARTMENT
- STUDIO APARTMENT

BLOCK B
1401, 1402, 1403,
1404, 1405, 1406,
1407, 1408, 1409, 1410
UNITS



PODIUM +
SWIMMING
POOL



MAIN ROAD

Disclaimer: 1. All room dimensions are measured to structural elements and exclude wall finishes and construction tolerances. 2. All dimensions have been provided by our consultant architects. 3. All materials, dimensions and drawings are approximate. Information is subject to change without notice. 4. Actual suite area may vary from the stated area. Drawings not to scale. The developer reserves the right to make revisions. 5. Calculation of suite area is measured as the area bounded by the centre line of demising or partition walls separating one unit from another unit, the exterior face of all exterior walls, and the exterior face of the corridor wall enclosing the adjoining unit. 6. Calculation of balcony area is measured as the area bounded by the centre line of demising or partition walls separating one unit from another unit, the outmost face of the enclosing guard and the external face of the adjoining balcony. 7. The units are measured at typical floor in the building. Columns may vary in size depending on the floor level. 8. For each unit type, unit sizes and details might be slightly different. Please refer to the sales and purchase agreement for the actual size of each specific unit.

Disclaimer: 1. All room dimensions are measured to structural elements and exclude wall finishes and construction tolerances. 2. All dimensions have been provided by our consultant architects. 3. All materials, dimensions and drawings are approximate. Information is subject to change without notice. 4. Actual suite area may vary from the stated area. Drawings not to scale. The developer reserves the right to make revisions. 5. Calculation of suite area is measured as the area bounded by the centre line of demising or partition walls separating one unit from another unit, the exterior face of all exterior walls, and the exterior face of the corridor wall enclosing the adjoining unit. 6. Calculation of balcony area is measured as the area bounded by the centre line of demising or partition walls separating one unit from another unit, the outmost face of the enclosing guard and the external face of the adjoining balcony. 7. The units are measured at typical floor in the building. Columns may vary in size depending on the floor level. 8. For each unit type, unit sizes and details might be slightly different. Please refer to the sales and purchase agreement for the actual size of each specific unit.

15

FLOOR

- 1 BEDROOM APARTMENT
- 2 BEDROOM APARTMENT
- 3 BEDROOM APARTMENT
- STUDIO APARTMENT

BLOCK B
1501, 1502, 1503,
1504, 1505, 1506,
1507, 1508, 1509, 1510
UNITS



16

FLOOR

- 1 BEDROOM APARTMENT
- 2 BEDROOM APARTMENT
- 3 BEDROOM APARTMENT
- STUDIO APARTMENT

BLOCK B
1601, 1602, 1603,
1604, 1605, 1606,
1607, 1608, 1609, 1610
UNITS



Disclaimer: 1. All room dimensions are measured to structural elements and exclude wall finishes and construction tolerances. 2. All dimensions have been provided by our consultant architects. 3. All materials, dimensions and drawings are approximate. Information is subject to change without notice. 4. Actual suite area may vary from the stated area. Drawings not to scale. The developer reserves the right to make revisions. 5. Calculation of suite area is measured as the area bounded by the centre line of demising or partition walls separating one unit from another unit, the exterior face of all exterior walls, and the exterior face of the corridor wall enclosing the adjoining unit. 6. Calculation of balcony area is measured as the area bounded by the centre line of demising or partition walls separating one unit from another unit, the outmost face of the enclosing guard and the external face of the adjoining balcony. 7. The units are measured at typical floor in the building. Columns may vary in size depending on the floor level. 8. For each unit type, unit sizes and details might be slightly different. Please refer to the sales and purchase agreement for the actual size of each specific unit.

Disclaimer: 1. All room dimensions are measured to structural elements and exclude wall finishes and construction tolerances. 2. All dimensions have been provided by our consultant architects. 3. All materials, dimensions and drawings are approximate. Information is subject to change without notice. 4. Actual suite area may vary from the stated area. Drawings not to scale. The developer reserves the right to make revisions. 5. Calculation of suite area is measured as the area bounded by the centre line of demising or partition walls separating one unit from another unit, the exterior face of all exterior walls, and the exterior face of the corridor wall enclosing the adjoining unit. 6. Calculation of balcony area is measured as the area bounded by the centre line of demising or partition walls separating one unit from another unit, the outmost face of the enclosing guard and the external face of the adjoining balcony. 7. The units are measured at typical floor in the building. Columns may vary in size depending on the floor level. 8. For each unit type, unit sizes and details might be slightly different. Please refer to the sales and purchase agreement for the actual size of each specific unit.

17

FLOOR

- 1 BEDROOM APARTMENT
- 2 BEDROOM APARTMENT
- 3 BEDROOM APARTMENT
- STUDIO APARTMENT

BLOCK B
1701, 1702, 1703, 1704,
1705, 1706, 1707, 1708,
1709, 1710
UNITS



18

FLOOR

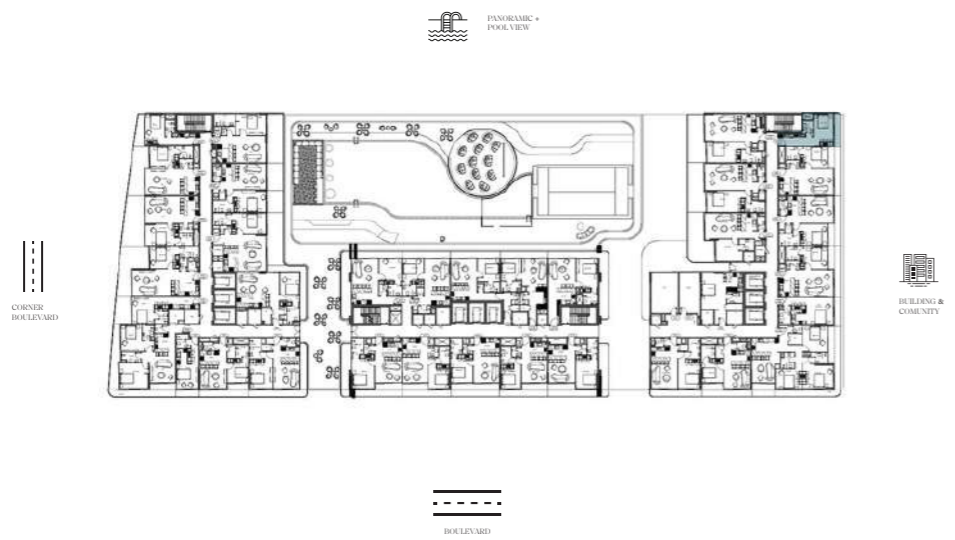
- 1 BEDROOM APARTMENT
- 2 BEDROOM APARTMENT
- 3 BEDROOM APARTMENT
- STUDIO APARTMENT

BLOCK B
1801, 1802, 1803,
1804, 1805, 1806,
1807
UNITS



Disclaimer: 1. All room dimensions are measured to structural elements and exclude wall finishes and construction tolerances. 2. All dimensions have been provided by our consultant architects. 3. All materials, dimensions and drawings are approximate. Information is subject to change without notice. 4. Actual suite area may vary from the stated area. Drawings not to scale. The developer reserves the right to make revisions. 5. Calculation of suite area is measured as the area bounded by the centre line of demising or partition walls separating one unit from another unit, the exterior face of all exterior walls, and the exterior face of the corridor wall enclosing the adjoining unit. 6. Calculation of balcony area is measured as the area bounded by the centre line of demising or partition walls separating one unit from another unit, the outmost face of the enclosing guard and the external face of the adjoining balcony. 7. The units are measured at typical floor in the building. Columns may vary in size depending on the floor level. 8. For each unit type, unit sizes and details might be slightly different. Please refer to the sales and purchase agreement for the actual size of each specific unit.

Disclaimer: 1. All room dimensions are measured to structural elements and exclude wall finishes and construction tolerances. 2. All dimensions have been provided by our consultant architects. 3. All materials, dimensions and drawings are approximate. Information is subject to change without notice. 4. Actual suite area may vary from the stated area. Drawings not to scale. The developer reserves the right to make revisions. 5. Calculation of suite area is measured as the area bounded by the centre line of demising or partition walls separating one unit from another unit, the exterior face of all exterior walls, and the exterior face of the corridor wall enclosing the adjoining unit. 6. Calculation of balcony area is measured as the area bounded by the centre line of demising or partition walls separating one unit from another unit, the outmost face of the enclosing guard and the external face of the adjoining balcony. 7. The units are measured at typical floor in the building. Columns may vary in size depending on the floor level. 8. For each unit type, unit sizes and details might be slightly different. Please refer to the sales and purchase agreement for the actual size of each specific unit.



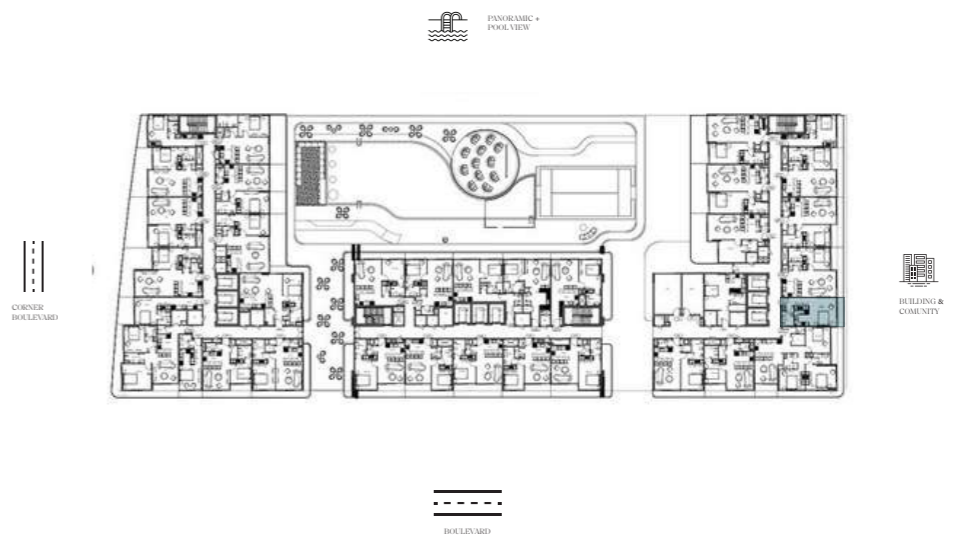
STUDIO APARTMENT

Refer the Floor Plans + Unit Types & Layouts Booklet for a complete list of unit types and layouts.

A BLOCK	01 FLOOR	01 TYPE	379.97 AREA sq. ft. <small>APT 319.69 + BAL 60.28</small>	VIEW BUILDING & COMUNITY
-------------------	--------------------	-------------------	--	---------------------------------------

List of unit numbers with this type:
BLOCK A: 0109.

Disclaimer: 1. All room dimensions are measured to structural elements and exclude wall finishes and construction tolerances. 2. All dimensions have been provided by our consultant architects. 3. All materials, dimensions and drawings are approximate. Information is subject to change without notice. 4. Actual suite area may vary from the stated area. Drawings not to scale. The developer reserves the right to make revisions. 5. Calculation of suite area is measured as the area bounded by the centre line of demising or partition walls separating one unit from another unit, the exterior face of all exterior walls, and the exterior face of the corridor wall enclosing the adjoining unit. 6. Calculation of balcony area is measured as the area bounded by the centre line of demising or partition walls separating one unit from another unit, the outmost face of the enclosing guard and the external face of the adjoining balcony. 7. The units are measured at typical floor in the building. Columns may vary in size depending on the floor level. 8. For each unit type, unit sizes and details might be slightly different. Please refer to the sales and purchase agreement for the actual size of each specific unit.



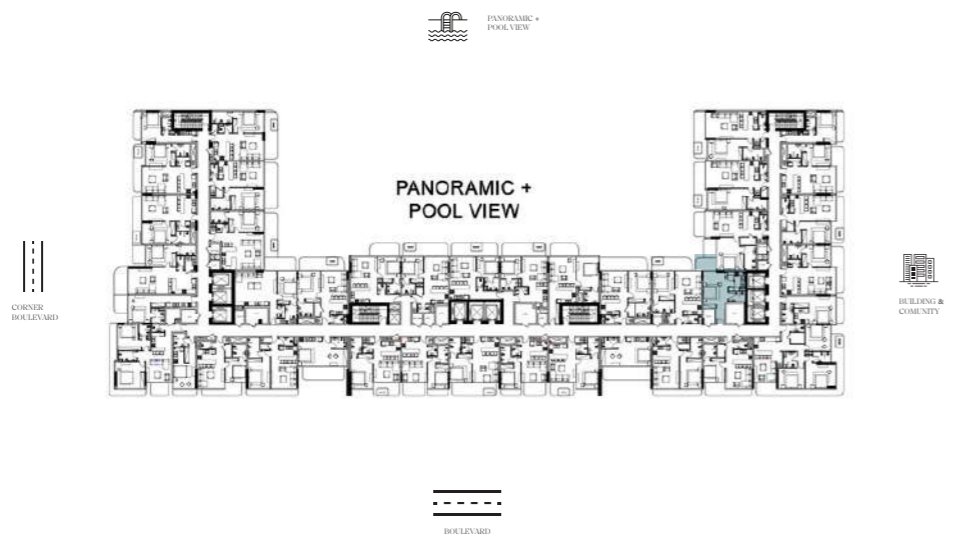
STUDIO APARTMENT

Refer the Floor Plans + Unit Types & Layouts Booklet for a complete list of unit types and layouts.

A BLOCK	01 FLOOR	02 TYPE	455.10 AREA sq. ft. <small>APT 401.28 + BAL 53.82</small>	VIEW BUILDING & COMUNITY
-------------------	--------------------	-------------------	--	---------------------------------------

List of unit numbers with this type:
BLOCK A: 0105.

Disclaimer: 1. All room dimensions are measured to structural elements and exclude wall finishes and construction tolerances. 2. All dimensions have been provided by our consultant architects. 3. All materials, dimensions and drawings are approximate. Information is subject to change without notice. 4. Actual suite area may vary from the stated area. Drawings not to scale. The developer reserves the right to make revisions. 5. Calculation of suite area is measured as the area bounded by the centre line of demising or partition walls separating one unit from another unit, the exterior face of all exterior walls, and the exterior face of the corridor wall enclosing the adjoining unit. 6. Calculation of balcony area is measured as the area bounded by the centre line of demising or partition walls separating one unit from another unit, the outmost face of the enclosing guard and the external face of the adjoining balcony. 7. The units are measured at typical floor in the building. Columns may vary in size depending on the floor level. 8. For each unit type, unit sizes and details might be slightly different. Please refer to the sales and purchase agreement for the actual size of each specific unit.



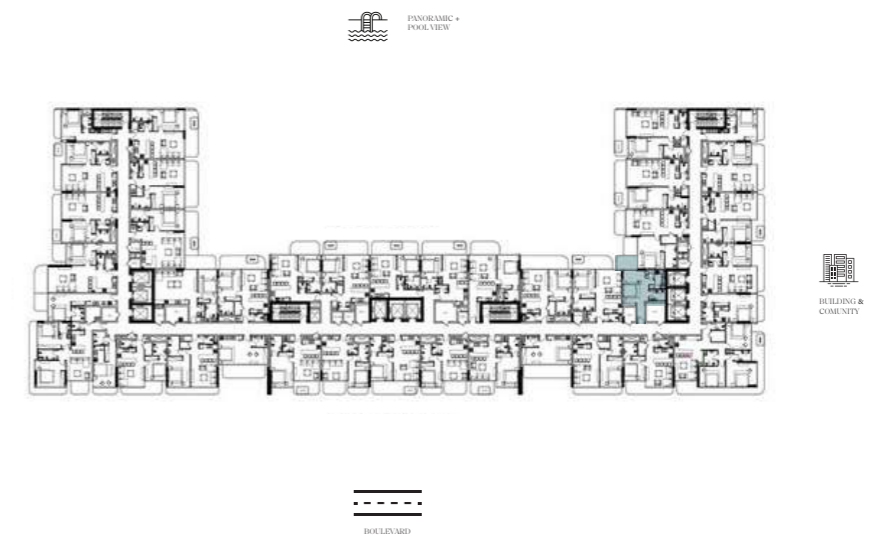
Refer the Floor Plans + Unit Types & Layouts Booklet for a complete list of unit types and layouts.

STUDIO APARTMENT

A BLOCK	04 FLOOR	03-LVL4 TYPE	479.31 AREA sq. ft. APT 408.05 + BAL 71.25	VIEW PANORAMIC & POOL
-------------------	--------------------	------------------------	---	--

List of unit numbers with this type:
BLOCK A: 0401.

Disclaimer: 1. All room dimensions are measured to structural elements and exclude wall finishes and construction tolerances. 2. All dimensions have been provided by our consultant architects. 3. All materials, dimensions and drawings are approximate. Information is subject to change without notice. 4. Actual suite area may vary from the stated area. Drawings not to scale. The developer reserves the right to make revisions. 5. Calculation of suite area is measured as the area bounded by the centre line of demising or partition walls separating one unit from another unit, the exterior face of all exterior walls, and the exterior face of the corridor wall enclosing the adjoining unit. 6. Calculation of balcony area is measured as the area bounded by the centre line of demising or partition walls separating one unit from another unit, the outmost face of the enclosing guard and the external face of the adjoining balcony. 7. The units are measured at typical floor in the building. Columns may vary in size depending on the floor level. 8. For each unit type, unit sizes and details might be slightly different. Please refer to the sales and purchase agreement for the actual size of each specific unit.



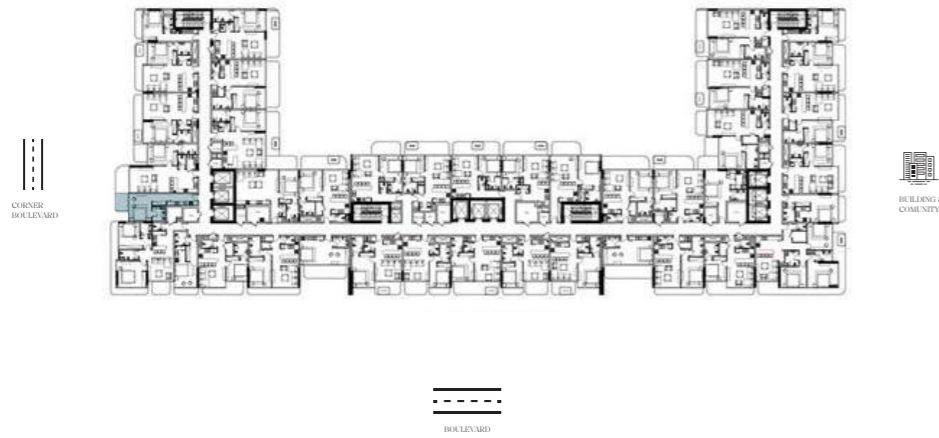
Refer the Floor Plans + Unit Types & Layouts Booklet for a complete list of unit types and layouts.

STUDIO APARTMENT

A BLOCK	02 FLOOR	03 TYPE	530.45 AREA sq. ft. APT 459.19 + BAL 71.26	VIEW PANORAMIC & POOL
-------------------	--------------------	-------------------	---	--

List of unit numbers with this type:
BLOCK A: 0201.

Disclaimer: 1. All room dimensions are measured to structural elements and exclude wall finishes and construction tolerances. 2. All dimensions have been provided by our consultant architects. 3. All materials, dimensions and drawings are approximate. Information is subject to change without notice. 4. Actual suite area may vary from the stated area. Drawings not to scale. The developer reserves the right to make revisions. 5. Calculation of suite area is measured as the area bounded by the centre line of demising or partition walls separating one unit from another unit, the exterior face of all exterior walls, and the exterior face of the corridor wall enclosing the adjoining unit. 6. Calculation of balcony area is measured as the area bounded by the centre line of demising or partition walls separating one unit from another unit, the outmost face of the enclosing guard and the external face of the adjoining balcony. 7. The units are measured at typical floor in the building. Columns may vary in size depending on the floor level. 8. For each unit type, unit sizes and details might be slightly different. Please refer to the sales and purchase agreement for the actual size of each specific unit.



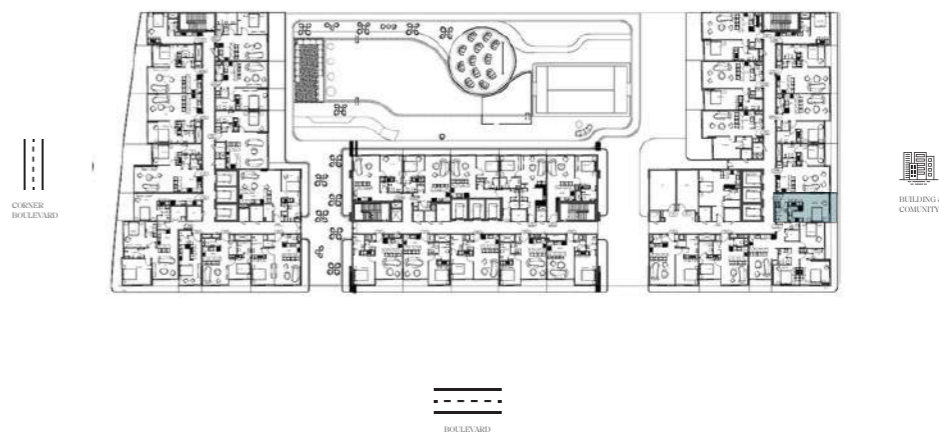
Refer the Floor Plans + Unit Types & Layouts Booklet for a complete list of unit types and layouts.

STUDIO APARTMENT

C BLOCK	01 FLOOR	05 TYPE	495.46 AREA sq. ft. APT 374.91 + BAL 120.56	VIEW CORNER BOULEVARD
-------------------	--------------------	-------------------	--	--

List of unit numbers with this type:
BLOCK C: 0108.

Disclaimer: 1. All room dimensions are measured to structural elements and exclude wall finishes and construction tolerances. 2. All dimensions have been provided by our consultant architects. 3. All materials, dimensions and drawings are approximate. Information is subject to change without notice. 4. Actual suite area may vary from the stated area. Drawings not to scale. The developer reserves the right to make revisions. 5. Calculation of suite area is measured as the area bounded by the centre line of demising or partition walls separating one unit from another unit, the exterior face of all exterior walls, and the exterior face of the corridor wall enclosing the adjoining unit. 6. Calculation of balcony area is measured as the area bounded by the centre line of demising or partition walls separating one unit from another unit, the outmost face of the enclosing guard and the external face of the adjoining balcony. 7. The units are measured at typical floor in the building. Columns may vary in size depending on the floor level. 8. For each unit type, unit sizes and details might be slightly different. Please refer to the sales and purchase agreement for the actual size of each specific unit.



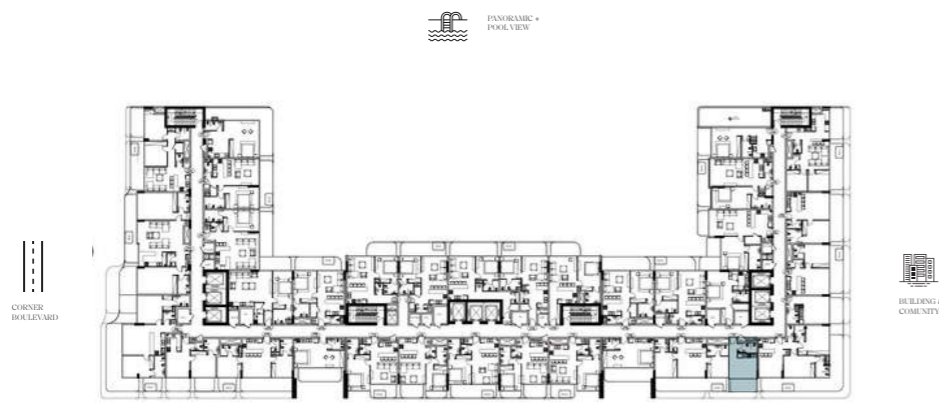
Refer the Floor Plans + Unit Types & Layouts Booklet for a complete list of unit types and layouts.

STUDIO APARTMENT

A BLOCK	10 FLOOR	02 TYPE	446.91 AREA sq. ft. APT 401.27 + BAL 45.63	VIEW BUILDING & COMUNITY
-------------------	--------------------	-------------------	---	---

List of unit numbers with this type:
BLOCK A: 1008.

Disclaimer: 1. All room dimensions are measured to structural elements and exclude wall finishes and construction tolerances. 2. All dimensions have been provided by our consultant architects. 3. All materials, dimensions and drawings are approximate. Information is subject to change without notice. 4. Actual suite area may vary from the stated area. Drawings not to scale. The developer reserves the right to make revisions. 5. Calculation of suite area is measured as the area bounded by the centre line of demising or partition walls separating one unit from another unit, the exterior face of all exterior walls, and the exterior face of the corridor wall enclosing the adjoining unit. 6. Calculation of balcony area is measured as the area bounded by the centre line of demising or partition walls separating one unit from another unit, the outmost face of the enclosing guard and the external face of the adjoining balcony. 7. The units are measured at typical floor in the building. Columns may vary in size depending on the floor level. 8. For each unit type, unit sizes and details might be slightly different. Please refer to the sales and purchase agreement for the actual size of each specific unit.



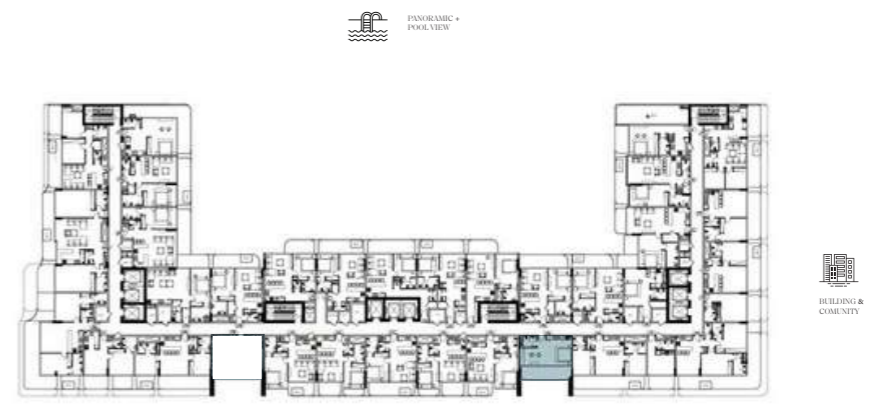
Refer the Floor Plans + Unit Types & Layouts Booklet for a complete list of unit types and layouts.

STUDIO APARTMENT

A BLOCK	12 FLOOR	07 TYPE	343.90 AREA sq. ft. APT 257.68 + BAL 86.21	VIEW BOULEVARD VIEW
-------------------	--------------------	-------------------	---	--

List of unit numbers with this type:
BLOCK A: 1206.

Disclaimer: 1. All room dimensions are measured to structural elements and exclude wall finishes and construction tolerances. 2. All dimensions have been provided by our consultant architects. 3. All materials, dimensions and drawings are approximate. Information is subject to change without notice. 4. Actual suite area may vary from the stated area. Drawings not to scale. The developer reserves the right to make revisions. 5. Calculation of suite area is measured as the area bounded by the centre line of demising or partition walls separating one unit from another unit, the exterior face of all exterior walls, and the exterior face of the corridor wall enclosing the adjoining unit. 6. Calculation of balcony area is measured as the area bounded by the centre line of demising or partition walls separating one unit from another unit, the outmost face of the enclosing guard and the external face of the adjoining balcony. 7. The units are measured at typical floor in the building. Columns may vary in size depending on the floor level. 8. For each unit type, unit sizes and details might be slightly different. Please refer to the sales and purchase agreement for the actual size of each specific unit.



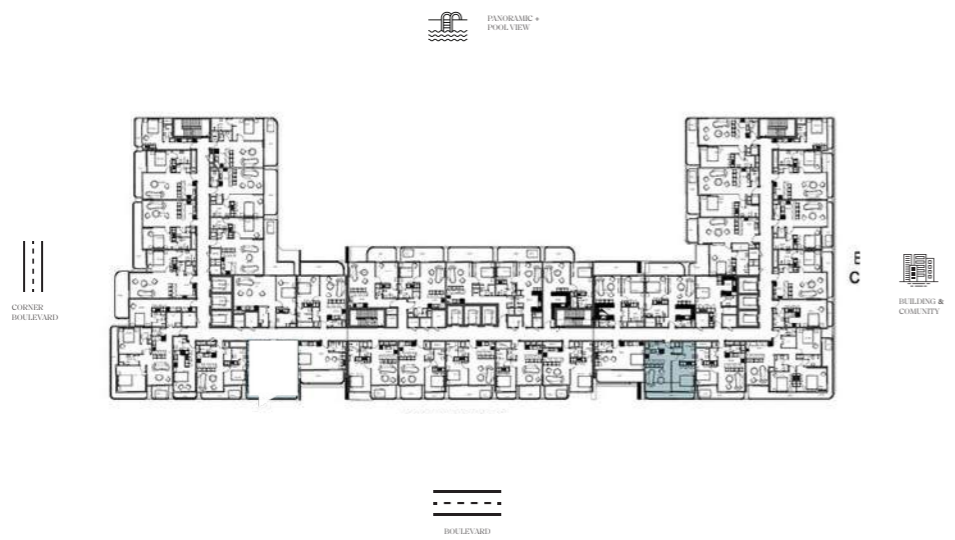
Refer the Floor Plans + Unit Types & Layouts Booklet for a complete list of unit types and layouts.

STUDIO APARTMENT

A BLOCK	04 FLOOR	08 TYPE	547.45 AREA sq. ft. APT 378.35 + BAL 169.10	VIEW BOULEVARD VIEW
-------------------	--------------------	-------------------	--	--

List of unit numbers with this type:
BLOCK A: 0404.

Disclaimer: 1. All room dimensions are measured to structural elements and exclude wall finishes and construction tolerances. 2. All dimensions have been provided by our consultant architects. 3. All materials, dimensions and drawings are approximate. Information is subject to change without notice. 4. Actual suite area may vary from the stated area. Drawings not to scale. The developer reserves the right to make revisions. 5. Calculation of suite area is measured as the area bounded by the centre line of demising or partition walls separating one unit from another unit, the exterior face of all exterior walls, and the exterior face of the corridor wall enclosing the adjoining unit. 6. Calculation of balcony area is measured as the area bounded by the centre line of demising or partition walls separating one unit from another unit, the outmost face of the enclosing guard and the external face of the adjoining balcony. 7. The units are measured at typical floor in the building. Columns may vary in size depending on the floor level. 8. For each unit type, unit sizes and details might be slightly different. Please refer to the sales and purchase agreement for the actual size of each specific unit.



1 BEDROOM APARTMENT

Refer the Floor Plans + Unit Types & Layouts Booklet for a complete list of unit types and layouts.

A
BLOCK

01
FLOOR

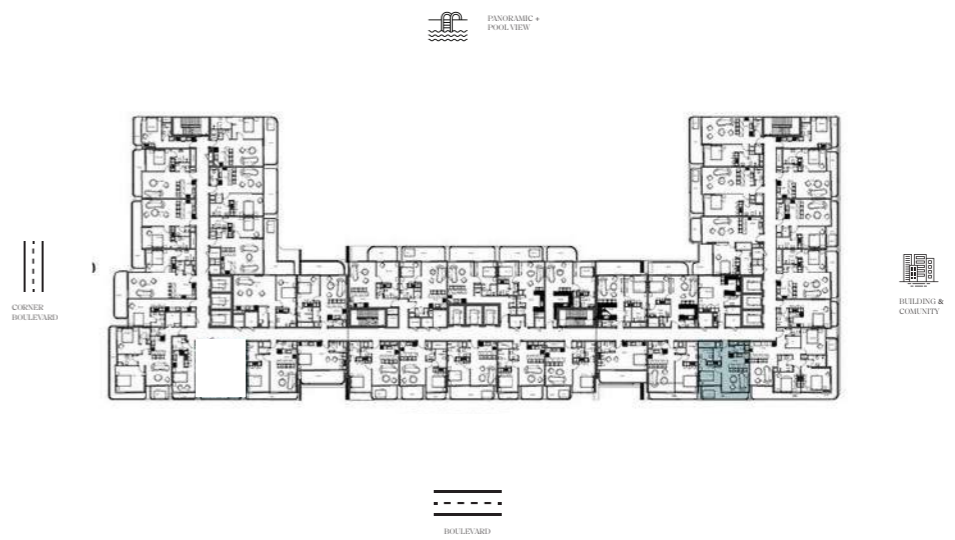
04
TYPE

751.64
AREA sq. ft.
APT 657.35 + BAL 94.29

VIEW
BOULEVARD
VIEW

List of unit numbers with this type:
BLOCK A: 0102.

Disclaimer: 1. All room dimensions are measured to structural elements and exclude wall finishes and construction tolerances. 2. All dimensions have been provided by our consultant architects. 3. All materials, dimensions and drawings are approximate. Information is subject to change without notice. 4. Actual suite area may vary from the stated area. Drawings not to scale. The developer reserves the right to make revisions. 5. Calculation of suite area is measured as the area bounded by the centre line of demising or partition walls separating one unit from another unit, the exterior face of all exterior walls, and the exterior face of the corridor wall enclosing the adjoining unit. 6. Calculation of balcony area is measured as the area bounded by the centre line of demising or partition walls separating one unit from another unit, the outmost face of the enclosing guard and the external face of the adjoining balcony. 7. The units are measured at typical floor in the building. Columns may vary in size depending on the floor level. 8. For each unit type, unit sizes and details might be slightly different. Please refer to the sales and purchase agreement for the actual size of each specific unit.



1 BEDROOM APARTMENT

Refer the Floor Plans + Unit Types & Layouts Booklet for a complete list of unit types and layouts.

A
BLOCK

01
FLOOR

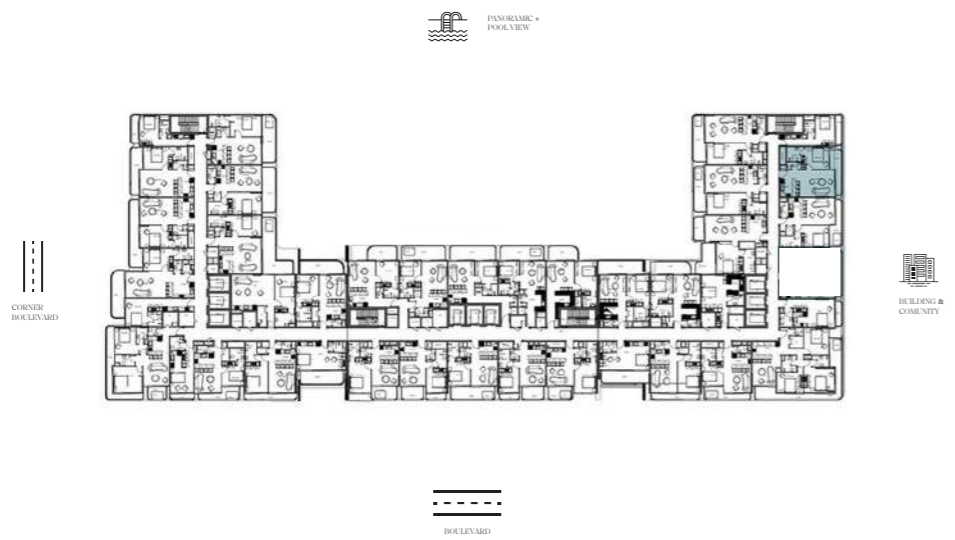
03
TYPE

705.36
AREA sq. ft.
APT 576.73 + BAL 128.63

VIEW
BOULEVARD
VIEW

List of unit numbers with this type:
BLOCK A with Jacuzzis: 0103.

Disclaimer: 1. All room dimensions are measured to structural elements and exclude wall finishes and construction tolerances. 2. All dimensions have been provided by our consultant architects. 3. All materials, dimensions and drawings are approximate. Information is subject to change without notice. 4. Actual suite area may vary from the stated area. Drawings not to scale. The developer reserves the right to make revisions. 5. Calculation of suite area is measured as the area bounded by the centre line of demising or partition walls separating one unit from another unit, the exterior face of all exterior walls, and the exterior face of the corridor wall enclosing the adjoining unit. 6. Calculation of balcony area is measured as the area bounded by the centre line of demising or partition walls separating one unit from another unit, the outmost face of the enclosing guard and the external face of the adjoining balcony. 7. The units are measured at typical floor in the building. Columns may vary in size depending on the floor level. 8. For each unit type, unit sizes and details might be slightly different. Please refer to the sales and purchase agreement for the actual size of each specific unit.



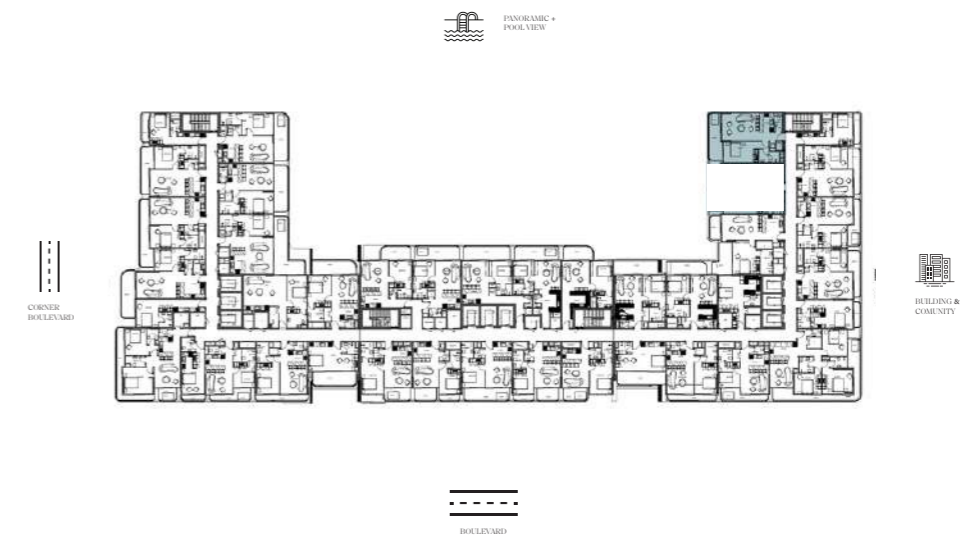
1 BEDROOM APARTMENT

Refer the Floor Plans + Unit Types & Layouts Booklet for a complete list of unit types and layouts.

A BLOCK	01 FLOOR	02 TYPE	777.48 AREA sq. ft. <small>APT 654.23 + BAL 123.25</small>	VIEW BUILDING & COMUNITY
-------------------	--------------------	-------------------	---	---

List of unit numbers with this type:
BLOCK A: 0107.

Disclaimer: 1. All room dimensions are measured to structural elements and exclude wall finishes and construction tolerances. 2. All dimensions have been provided by our consultant architects. 3. All materials, dimensions and drawings are approximate. Information is subject to change without notice. 4. Actual suite area may vary from the stated area. Drawings not to scale. The developer reserves the right to make revisions. 5. Calculation of suite area is measured as the area bounded by the centre line of demising or partition walls separating one unit from another unit, the exterior face of all exterior walls, and the exterior face of the corridor wall enclosing the adjoining unit. 6. Calculation of balcony area is measured as the area bounded by the centre line of demising or partition walls separating one unit from another unit, the outmost face of the enclosing guard and the external face of the adjoining balcony. 7. The units are measured at typical floor in the building. Columns may vary in size depending on the floor level. 8. For each unit type, unit sizes and details might be slightly different. Please refer to the sales and purchase agreement for the actual size of each specific unit.



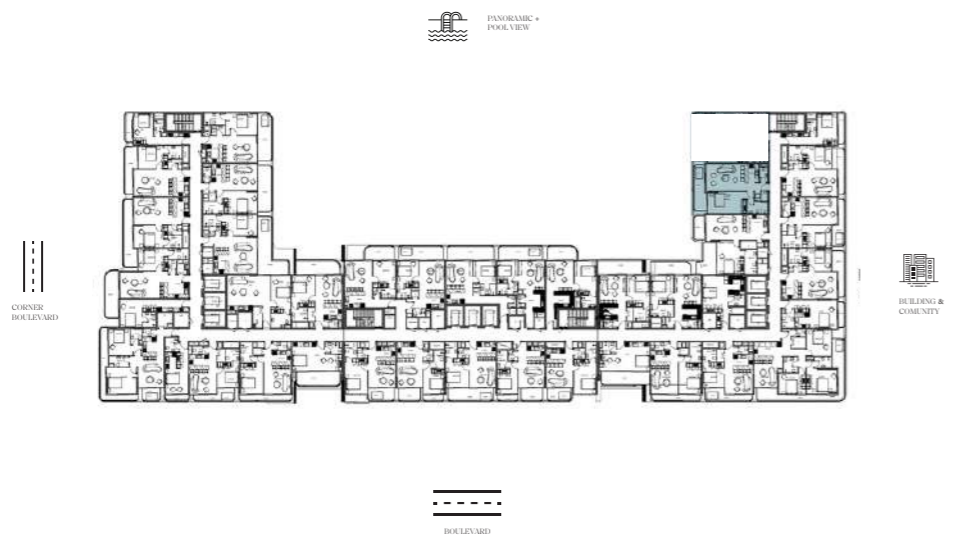
1 BEDROOM APARTMENT

Refer the Floor Plans + Unit Types & Layouts Booklet for a complete list of unit types and layouts.

A BLOCK	01 FLOOR	01 TYPE	973.70 AREA sq. ft. <small>APT 750.78 + BAL 222.92</small>	VIEW PANORAMIC & POOL
-------------------	--------------------	-------------------	---	--

List of unit numbers with this type:
BLOCK A with Jaccuzzi: 0110.

Disclaimer: 1. All room dimensions are measured to structural elements and exclude wall finishes and construction tolerances. 2. All dimensions have been provided by our consultant architects. 3. All materials, dimensions and drawings are approximate. Information is subject to change without notice. 4. Actual suite area may vary from the stated area. Drawings not to scale. The developer reserves the right to make revisions. 5. Calculation of suite area is measured as the area bounded by the centre line of demising or partition walls separating one unit from another unit, the exterior face of all exterior walls, and the exterior face of the corridor wall enclosing the adjoining unit. 6. Calculation of balcony area is measured as the area bounded by the centre line of demising or partition walls separating one unit from another unit, the outmost face of the enclosing guard and the external face of the adjoining balcony. 7. The units are measured at typical floor in the building. Columns may vary in size depending on the floor level. 8. For each unit type, unit sizes and details might be slightly different. Please refer to the sales and purchase agreement for the actual size of each specific unit.



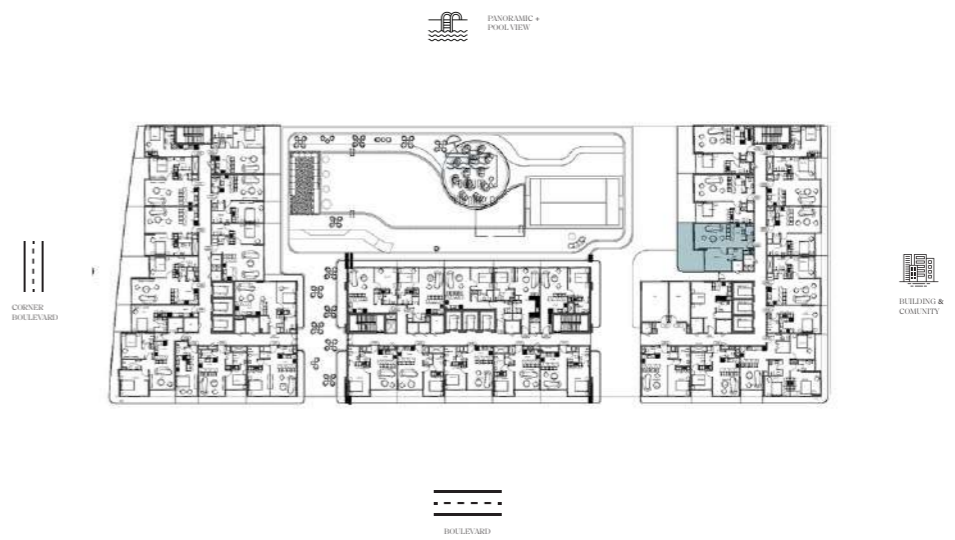
1 BEDROOM APARTMENT

Refer the Floor Plans + Unit Types & Layouts Booklet for a complete list of unit types and layouts.

A BLOCK	01 FLOOR	01 TYPE	993.83 AREA sq. ft. APT 768.44 + BAL 225.40	VIEW PANORAMIC & POOL
------------	-------------	------------	---	-----------------------------

List of unit numbers with this type:
BLOCK A with Jacuzzi: 0111.

Disclaimer: 1. All room dimensions are measured to structural elements and exclude wall finishes and construction tolerances. 2. All dimensions have been provided by our consultant architects. 3. All materials, dimensions and drawings are approximate. Information is subject to change without notice. 4. Actual suite area may vary from the stated area. Drawings not to scale. The developer reserves the right to make revisions. 5. Calculation of suite area is measured as the area bounded by the centre line of demising or partition walls separating one unit from another unit, the exterior face of all exterior walls, and the exterior face of the corridor wall enclosing the adjoining unit. 6. Calculation of balcony area is measured as the area bounded by the centre line of demising or partition walls separating one unit from another unit, the outmost face of the enclosing guard and the external face of the adjoining balcony. 7. The units are measured at typical floor in the building. Columns may vary in size depending on the floor level. 8. For each unit type, unit sizes and details might be slightly different. Please refer to the sales and purchase agreement for the actual size of each specific unit.



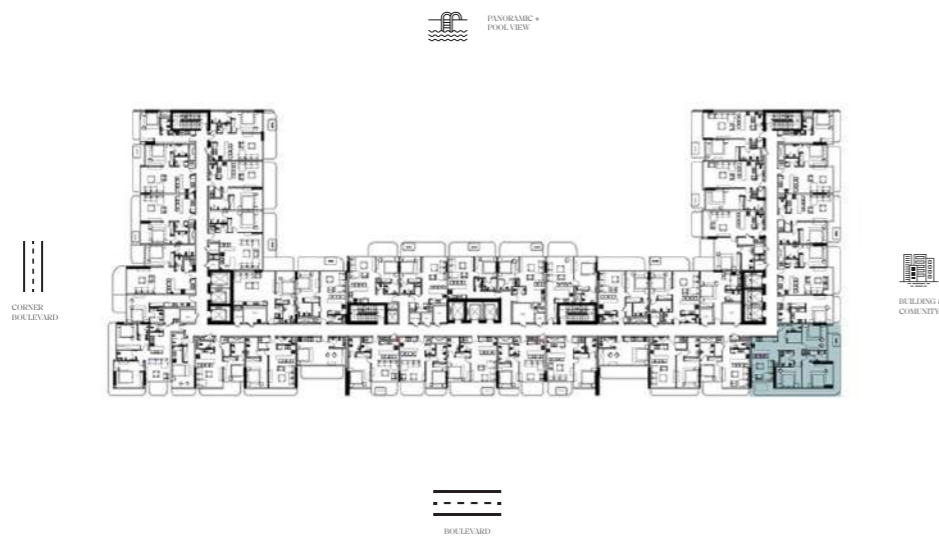
1 BEDROOM APARTMENT

Refer the Floor Plans + Unit Types & Layouts Booklet for a complete list of unit types and layouts.

A BLOCK	01 FLOOR	09-LVL1 TYPE	909.65 AREA sq. ft. APT 633.02 + BAL 276.63	VIEW PANORAMIC & POOL
------------	-------------	-----------------	---	-----------------------------

List of unit numbers with this type:
BLOCK A: 0112.

Disclaimer: 1. All room dimensions are measured to structural elements and exclude wall finishes and construction tolerances. 2. All dimensions have been provided by our consultant architects. 3. All materials, dimensions and drawings are approximate. Information is subject to change without notice. 4. Actual suite area may vary from the stated area. Drawings not to scale. The developer reserves the right to make revisions. 5. Calculation of suite area is measured as the area bounded by the centre line of demising or partition walls separating one unit from another unit, the exterior face of all exterior walls, and the exterior face of the corridor wall enclosing the adjoining unit. 6. Calculation of balcony area is measured as the area bounded by the centre line of demising or partition walls separating one unit from another unit, the outmost face of the enclosing guard and the external face of the adjoining balcony. 7. The units are measured at typical floor in the building. Columns may vary in size depending on the floor level. 8. For each unit type, unit sizes and details might be slightly different. Please refer to the sales and purchase agreement for the actual size of each specific unit.



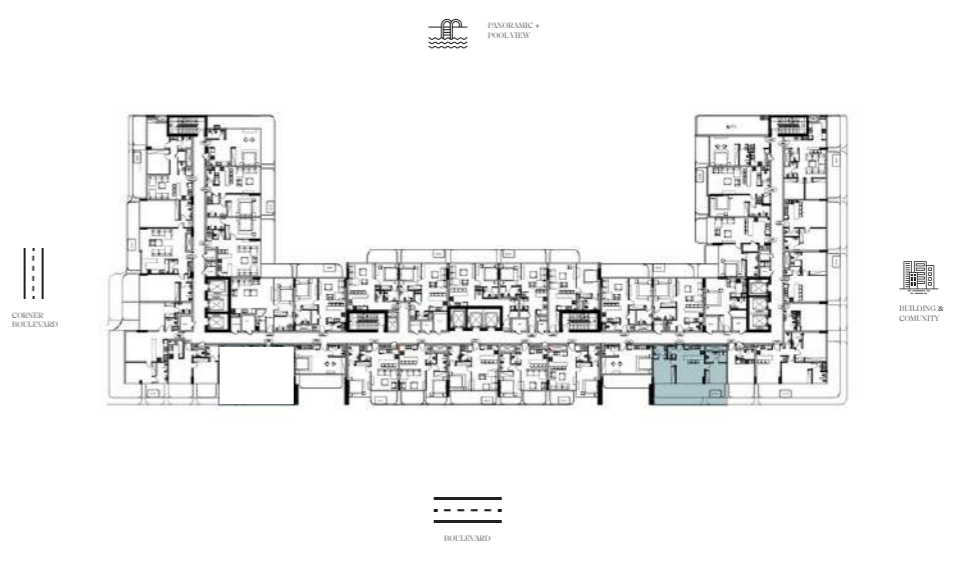
3 BEDROOM APARTMENT

Refer the Floor Plans + Unit Types & Layouts Booklet for a complete list of unit types and layouts.

A BLOCK	01 FLOOR	01 TYPE	1547.42 AREA sq. ft. <small>APT 1174.77 + BAL 372.65</small>	VIEW BOULEVARD VIEW
-------------------	--------------------	-------------------	---	--

List of unit numbers with this type:
BLOCK A with Jacuzzi: 0104.

Disclaimer: 1. All room dimensions are measured to structural elements and exclude wall finishes and construction tolerances. 2. All dimensions have been provided by our consultant architects. 3. All materials, dimensions and drawings are approximate. Information is subject to change without notice. 4. Actual suite area may vary from the stated area. Drawings not to scale. The developer reserves the right to make revisions. 5. Calculation of suite area is measured as the area bounded by the centre line of demising or partition walls separating one unit from another unit, the exterior face of all exterior walls, and the exterior face of the corridor wall enclosing the adjoining unit. 6. Calculation of balcony area is measured as the area bounded by the centre line of demising or partition walls separating one unit from another unit, the outmost face of the enclosing guard and the external face of the adjoining balcony. 7. The units are measured at typical floor in the building. Columns may vary in size depending on the floor level. 8. For each unit type, unit sizes and details might be slightly different. Please refer to the sales and purchase agreement for the actual size of each specific unit.



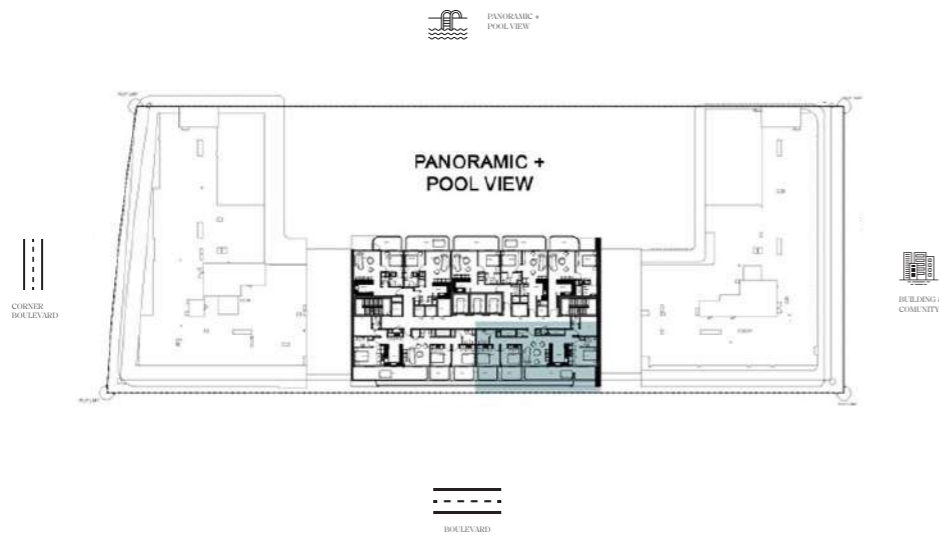
2 BEDROOM APARTMENT

Refer the Floor Plans + Unit Types & Layouts Booklet for a complete list of unit types and layouts.

A BLOCK	12 FLOOR	04 TYPE	930.43 AREA sq. ft. <small>APT 688.99 + BAL 241.43</small>	VIEW BOULEVARD VIEW
-------------------	--------------------	-------------------	---	--

List of unit numbers with this type:
BLOCK A: 1205.

Disclaimer: 1. All room dimensions are measured to structural elements and exclude wall finishes and construction tolerances. 2. All dimensions have been provided by our consultant architects. 3. All materials, dimensions and drawings are approximate. Information is subject to change without notice. 4. Actual suite area may vary from the stated area. Drawings not to scale. The developer reserves the right to make revisions. 5. Calculation of suite area is measured as the area bounded by the centre line of demising or partition walls separating one unit from another unit, the exterior face of all exterior walls, and the exterior face of the corridor wall enclosing the adjoining unit. 6. Calculation of balcony area is measured as the area bounded by the centre line of demising or partition walls separating one unit from another unit, the outmost face of the enclosing guard and the external face of the adjoining balcony. 7. The units are measured at typical floor in the building. Columns may vary in size depending on the floor level. 8. For each unit type, unit sizes and details might be slightly different. Please refer to the sales and purchase agreement for the actual size of each specific unit.



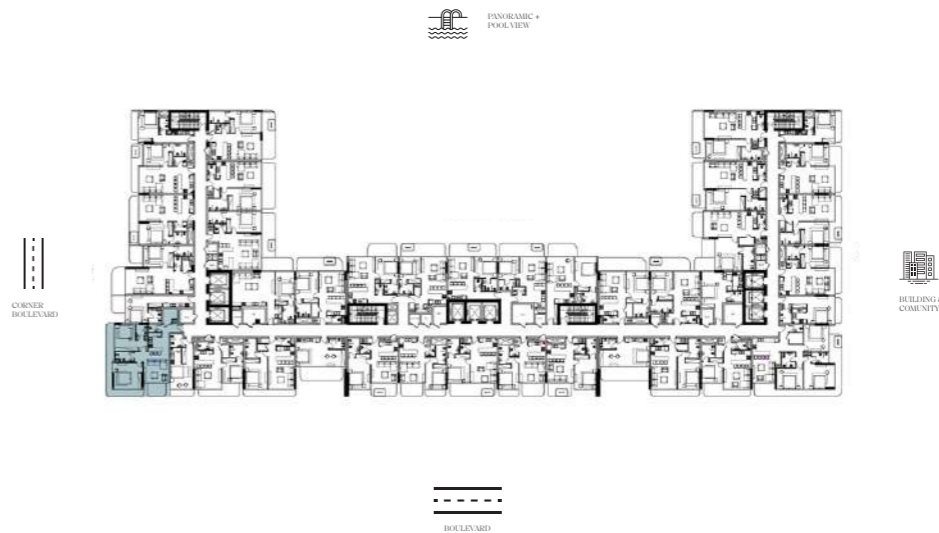
3 BEDROOM APARTMENT

Refer the Floor Plans + Unit Types & Layouts Booklet for a complete list of unit types and layouts.

B BLOCK	01 FLOOR	01 TYPE	1639.24 AREA sq. ft. APT 1241.29 + BAL 397.94	VIEW BOULEVARD VIEW
-------------------	--------------------	-------------------	--	--

List of unit numbers with this type:
BLOCK A with Jacuzzi: 1804.

Disclaimer: 1. All room dimensions are measured to structural elements and exclude wall finishes and construction tolerances. 2. All dimensions have been provided by our consultant architects. 3. All materials, dimensions and drawings are approximate. Information is subject to change without notice. 4. Actual suite area may vary from the stated area. Drawings not to scale. The developer reserves the right to make revisions. 5. Calculation of suite area is measured as the area bounded by the centre line of demising or partition walls separating one unit from another unit, the exterior face of all exterior walls, and the exterior face of the corridor wall enclosing the adjoining unit. 6. Calculation of balcony area is measured as the area bounded by the centre line of demising or partition walls separating one unit from another unit, the outmost face of the enclosing guard and the external face of the adjoining balcony. 7. The units are measured at typical floor in the building. Columns may vary in size depending on the floor level. 8. For each unit type, unit sizes and details might be slightly different. Please refer to the sales and purchase agreement for the actual size of each specific unit.



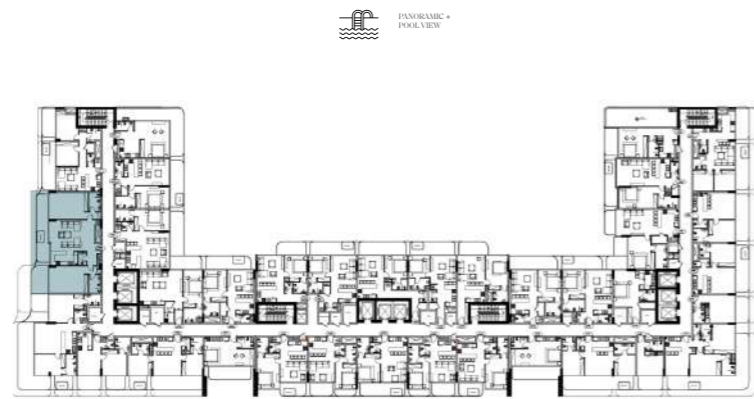
2 BEDROOM APARTMENT

Refer the Floor Plans + Unit Types & Layouts Booklet for a complete list of unit types and layouts.

C BLOCK	2 FLOOR	01 TYPE	1227.62 AREA sq. ft. APT 985.97 + BAL 241.65	VIEW BOULEVARD VIEW
-------------------	-------------------	-------------------	---	--

List of unit numbers with this type:
BLOCK C with Jacuzzi: 0209.

Disclaimer: 1. All room dimensions are measured to structural elements and exclude wall finishes and construction tolerances. 2. All dimensions have been provided by our consultant architects. 3. All materials, dimensions and drawings are approximate. Information is subject to change without notice. 4. Actual suite area may vary from the stated area. Drawings not to scale. The developer reserves the right to make revisions. 5. Calculation of suite area is measured as the area bounded by the centre line of demising or partition walls separating one unit from another unit, the exterior face of all exterior walls, and the exterior face of the corridor wall enclosing the adjoining unit. 6. Calculation of balcony area is measured as the area bounded by the centre line of demising or partition walls separating one unit from another unit, the outmost face of the enclosing guard and the external face of the adjoining balcony. 7. The units are measured at typical floor in the building. Columns may vary in size depending on the floor level. 8. For each unit type, unit sizes and details might be slightly different. Please refer to the sales and purchase agreement for the actual size of each specific unit.



■ 2 BEDROOM APARTMENT

Refer the Floor Plans + Unit Types & Layouts Booklet for a complete list of unit types and layouts.

C
BLOCK

12
FLOOR

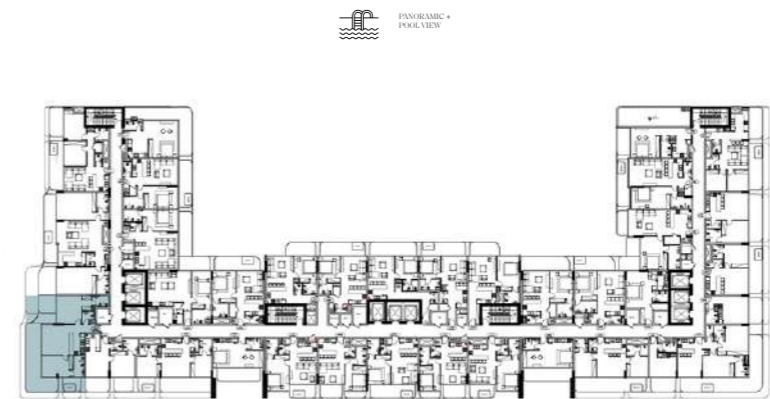
06
TYPE

1621.47
AREA sq. ft.
APT 1289.83 + BAL 331.63

VIEW
CORNER
BOULEVARD

List of unit numbers with this type:
BLOCK C: 1203.

Disclaimer: 1. All room dimensions are measured to structural elements and exclude wall finishes and construction tolerances. 2. All dimensions have been provided by our consultant architects. 3. All materials, dimensions and drawings are approximate. Information is subject to change without notice. 4. Actual suite area may vary from the stated area. Drawings not to scale. The developer reserves the right to make revisions. 5. Calculation of suite area is measured as the area bounded by the centre line of demising or partition walls separating one unit from another unit, the exterior face of all exterior walls, and the exterior face of the corridor wall enclosing the adjoining unit. 6. Calculation of balcony area is measured as the area bounded by the centre line of demising or partition walls separating one unit from another unit, the outmost face of the enclosing guard and the external face of the adjoining balcony. 7. The units are measured at typical floor in the building. Columns may vary in size depending on the floor level. 8. For each unit type, unit sizes and details might be slightly different. Please refer to the sales and purchase agreement for the actual size of each specific unit.



■ 2 BEDROOM APARTMENT

Refer the Floor Plans + Unit Types & Layouts Booklet for a complete list of unit types and layouts.

C
BLOCK

13
FLOOR

05
TYPE

1383.70
AREA sq. ft.
APT 918.80 + BAL 464.89

VIEW
CORNER
BOULEVARD

List of unit numbers with this type:
BLOCK C: 1303.

Disclaimer: 1. All room dimensions are measured to structural elements and exclude wall finishes and construction tolerances. 2. All dimensions have been provided by our consultant architects. 3. All materials, dimensions and drawings are approximate. Information is subject to change without notice. 4. Actual suite area may vary from the stated area. Drawings not to scale. The developer reserves the right to make revisions. 5. Calculation of suite area is measured as the area bounded by the centre line of demising or partition walls separating one unit from another unit, the exterior face of all exterior walls, and the exterior face of the corridor wall enclosing the adjoining unit. 6. Calculation of balcony area is measured as the area bounded by the centre line of demising or partition walls separating one unit from another unit, the outmost face of the enclosing guard and the external face of the adjoining balcony. 7. The units are measured at typical floor in the building. Columns may vary in size depending on the floor level. 8. For each unit type, unit sizes and details might be slightly different. Please refer to the sales and purchase agreement for the actual size of each specific unit.



Visit the show apartment at the Meteora Sales and Experience Centre at Jumeirah Village Circle.

A PROJECT BY METEORA DEVELOPERS

METEORA DEVELOPERS, METEORA DEVELOPERS PRESENTS, the tagline 'Step into the world of elevated Privileges' and the project names THE EAST CREST, 7 PARK CENTRAL, VITA GRANDE, PARK BOULEVARD and VIVANTI RESIDENCES are trademarks. All trademarks, their associated logos and brand names mentioned in this document are property of their respective owners and may not be used in connection with any product, service or solution that is not a METEORA DEVELOPER's communication and will require prior approval.

www.meteoradevelopers.com





A PROJECT BY

METEORA

DEVELOPERS